

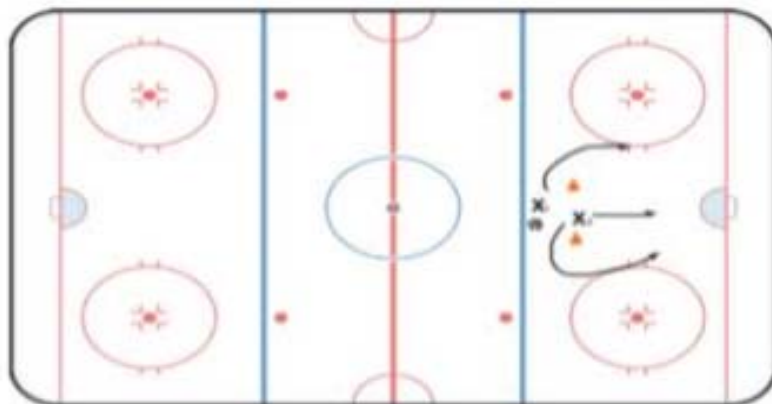
# 14 Select Camp 2018: Goalie World Day 1 Practice Plan

Generated on Jun 27, 2018 by Hockey ClipPad.

**Duration:**

## KB 2v0

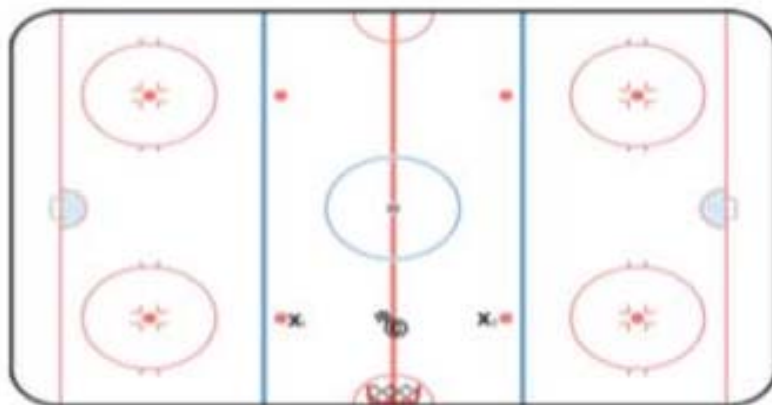
X1 carries puck around either cone  
X2 net drive or weak side drive.  
Shoot to score or shoot for redirect



**Duration:**

## KB Full Recovery

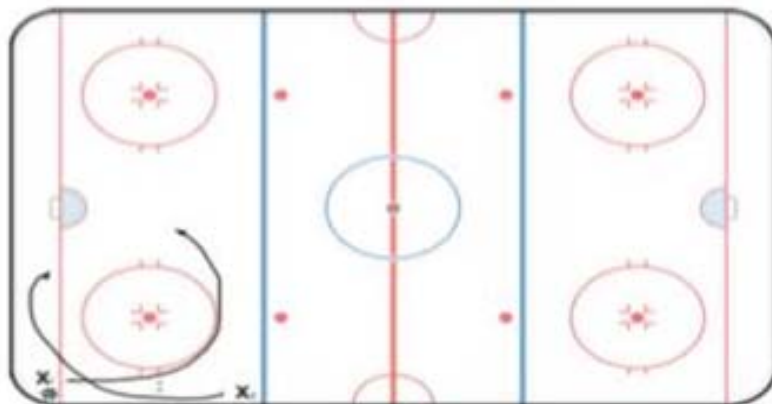
G starts in butterfly.  
C passes to either shooter, goalie must recover to feet for shot.



**Duration:**

## Takeover/ Fakeover

Low to high takeover or fakeover.  
Option for one additional pass after.



**Duration:**

## CO Cycle

X1 pass to X2, follow pass and be an option for quick pass back  
X2 carry puck behind net with options to hit X1 if goalie cheats, wrap, or hit X3 in slot.

