

M | RECREATION



Sport Coliseum FAQs

Address: 721 S Fifth Ave, Ann Arbor, MI 48104

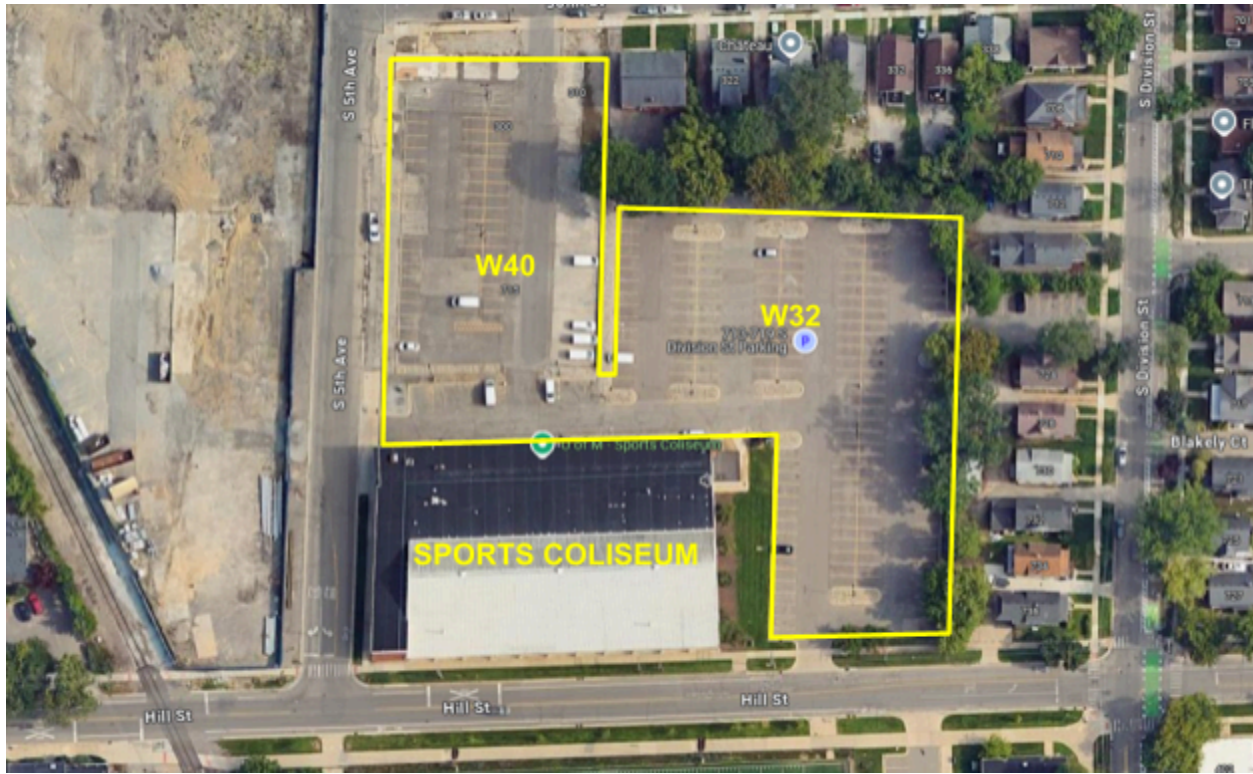
What to Expect When you Arrive:

- The entrance to the Sports Coliseum can be found on the north side of the building, adjacent to the parking lot (W32 & W40 - see map on page 2)
- Michigan Recreation student staff will arrive to unlock the doors and prepare the facility approximately 15 minutes prior to your rental starting
- The facility will likely not be open or accessible prior to that, unless there is another event scheduled prior to yours
- Please check-in with the student supervisor when you arrive to gather rental equipment, ask questions, etc
- The student supervisor can typically be found in the student office located just inside the main entrance

Important Facility Information:

- The facility features men's and women's restrooms, as well as two ADA accessible bathrooms
- There are two full basketball courts w/baskets on both ends
- There are four indoor soccer goals onsite
- There are two sets of small bleachers that can be used
- The facility does not have air conditioning
- The facility does have drinking fountains and an ice machine for sports injuries
- Food and beverage are not allowed on the gym playing surface

Parking Info



Lots W32 & W40:

Open to the public after 5pm (Mon-Fri) & All-day on Weekends (except home Football Saturdays)

Other Parking Options:

There is select street parking in the neighborhood surrounding the Sports Coliseum (S Division St, Sybil St, Mary St, Benjamin St, Brown St)

Note:

- Make sure to read to all parking signage carefully
- Illegally parked vehicles are subject to ticketing and/or towing
- Any questions regarding parking should be directed to [Logistics, Parking, and Transportation](#)