



New Prague Hockey kick-off presentation



Topics:

- State of the Association & Highlights/Objectives for 2023-24
- Association and parent “Code of Conduct” & Safe Sport
- Registration/Website/Communication/Handbook
- Hockey Development Committee (HDC) & Tryouts
- New Mite/8U this year?
- Junior Gold
- Fundraising
- Volunteer Hours & Concession Stand
- Conclusion

NPHA Board Members

Aaron Lindholm, President

npha.president@gmail.com
612-269-2405

Jason Olson, Vice President

jasonolson27@gmail.com
952-232-8280

Miranda Vertnik, Secretary

Secretaryregistrar.npha@gmail.com
612-703-8304

Ben Jones, Treasurer

nphatreasurer@gmail.com
612-730-2499

Amanda Will, Manager Director

npha.managerdirector@gmail.com
952-220-8604

Jess Snyder, Communications Director

nptrojanhockey@gmail.com
952-215-2987

Mike Westing, Director of Operations

nphadirectoroperations@gmail.com
763-350-2222

Kirk Crabb, Board Member at Large

kirkcrabbnpha@gmail.com
952-917-9238

Tony Robles, Past Board Member

tonyrobles.npha@gmail.com
952-250-3764



Board positions up for election next season:

- **The following Board positions are up for re-election to a 2-year term beginning April 2024:**
 - President
 - Secretary
 - Communications Director
 - Past Board Member
 - Director of Operations
- **The following Board positions will be available for a 1-year interim term beginning April 2023:**
 - Manager Director

Reach out to Aaron Lindholm or Miranda Vertnik if you have any questions about these positions.

NPHA Coordinators

HDC Coordinator -- Tim Applen

Volunteer Coordinator – Aimee Bombardo

Mite Coordinator – OPEN POSITION

SafeSport Coordinator – Chelsea Casey

Outdoor Rink Coordinator – Jeremy Denzer

Ice Time Scheduler – Avario Sports Scheduler

Gambling Manager - Nate Borwege

Website and Technology Coordinator - OPEN

Concession Stand Coordinator – Ashley Lindholm

Tournament Coordinator – OPEN POSITION

Clothing & Apparel Coordinator – Amanda Will

Raffle Calendar Coordinator – Renae Crabb

Equipment Coordinator – Troy Gilbertson

Recruitment & Retention – Brandy Rife

Sponsorship Coordinator – Hollie Weckman

NPHA Board Meetings

- Meetings are held the **second Wednesday of each month at 7pm** (NP Fire Department)
- Meetings are open to the association membership, please attend!
- Meeting agenda is posted on the “About NPHA” page of our website on or near the 1st of every month.



Association Highlights

- We have purchased 34 sets of mite gear for a new rental program, thanks to a couple of gracious donors.
- Year-round ice at the ice rink is up and running!
- Preseason clinic is in full swing!
- Our junior gold head coach is coming back for a second season.
- New jerseys are looking amazing!



Parent behavior and expectations

- Section VIII in our handbook, is the parent roles & responsibilities section. PLEASE REVIEW this.
- Remember the game is for the kids, not the adults.
- The hockey community consists of everyone. Let's all hold each other accountable!
- The disciplinary committee will be following the handbook. Please review.



USA Hockey's Safe Sport Program

What topics does the Safe Sport Program address?

- ❖ Sexual Abuse
- ❖ Physical Abuse
- ❖ Emotional Abuse
- ❖ Bullying, Threats and Harassment
- ❖ Hazing
- ❖ Locker room, social media, and travel guidelines

USA Hockey is committed to creating a safe and positive environment for its participants' physical, emotional, and social development and to ensuring that it promotes an environment free from abuse and misconduct.

USA Hockey has **ZERO TOLERANCE** policy regarding all forms of abuse and/or misconduct.



What topics
does the Safe
Sport Program
NOT address?

- ❖ Coaching Style
- ❖ Structure/Plan of Game Play
- ❖ Distribution of Playing Time
- ❖ Player Position Assignments
- ❖ Disputes between parent/player expectations and coach's expectations

- ❖ Please Note: Issues not related to abuse or misconduct are treated under the NPHA Discipline Policy

Who will complete Safe Sport training?

- ❖ Administrators within the Association
- ❖ Coaches
- ❖ Volunteers
- ❖ Managers
- ❖ Locker Room Monitors
- ❖ Junior Gold players ages 17+
- ❖ **Safe Sport training is required yearly**
- ❖ **Everyone needs to send their USA Hockey Membership number to Miranda (Registrar) as the district requires us to track these trainings. Certificates should be sent to our Safe Sport Coordinator.**

Key Safe Sport Points

- ❖ Safe Sport guidelines apply to **all** participants
- ❖ Locker Rooms **MUST BE MONITORED** – Please remind your kids to wait for the LRM to arrive before entering the locker rooms.
- ❖ **No electronic devices are allowed in locker rooms** (i.e. ipods, phones, cameras, etc.), **please tell your upper-level players this rule.**
- ❖ No 1 on 1 interaction between player and coach/adult
- ❖ Any incidents of abuse or misconduct are reportable!!! Player versus player, player versus coach, coach versus player, etc...
- ❖ Incidents can take place on the ice, bench, in locker room, at school, on social media, etc...



Contacts Regarding Safe Sport Issues:

❖ **NPHA Safe Sport Coordinator:**

Chelsea Casey, (952) 215-4351, NPHASSC@gmail.com

❖ **District 6 Safe Sport Coordinator:**

Jennifer Boulden (952) 212-2725, Jennifer.boulden@yahoo.com

❖ **New Prague Police Department:**

(952) 758-2791

❖ **Scott County Human Services:**

(952) 445-7751

Player Registration...

- All players who are **NEW** to NPHA, need to submit proof of their child's DOB to the Registrar before they can be added to a team roster
- Waivers into NPHA must be completed *in full* before a player can be added to a team roster
- New Mite/8U players can still register, no late fee for new players!
- Looking ahead to next year...Player Petitions for 2024-25 season - letters of intent will be due April 15th



Communications and Handbook

- Team communications will be sent through SportsEngine, download the app to your phone
- General communications are emailed through SportsEngine as well – if you are not receiving emails from the association, you will need to change your SE settings to allow yourself to receive email communications. We are not allowed to change this setting for you.
- 2023-24 Handbook can be found on our website on the “Registration Docs” and the “Parent Docs” pages

Hockey Development Committee (HDC)

- Use of outside evaluators for tryouts
- Use of Team Genius software during tryouts, mid-season, & end of season player evaluations
- “Coach Them” app software
- Level specific coaches’ meetings with players and parents
- Special Skills Practices with Butch and Mega Goaltending
- It is still our goal to bring in more non-parent coaches



Skater Tryouts Format – 2023/24



Skills Day 1

5 Scores 20% Each
25% of Total Score

- Basic Skating
- Edges and Balance
- Basic Puck Skills
- Transitions
- Crossover Skills

Skills Day 2

3 Scores 33% Each
25% of Total Score

- Basic Shooting
- Passing & Puck Control
- Offensive Play, Defensive Play

Scrimmage Day

4 Scores 25% Each
50% of Total Score

- Player Engagement
- Physical Engagement
- Defensive Ability & Two Way Play
- Scoring Ability

- **Each player gets 12 scores through 3 days**
 - Evaluators use Team Genius software to assign a score from 0-5 for each of the qualitative measures.
- **Day 4 is reserved for bubble players-ranking of the determined bubble**
- **Last year, each upper-level session had ~15 players in each session.**
- **Through the 3 scoring days in Team Genius, 8 different evaluators scored PW and Bantams**
 - Evaluators that work the first 3 days entered over 500 scores just for the peewees (45 skaters, some players missed a session or two)

Drills Loaded into Coach Them

NPHA Assessment - Day 2 Skills

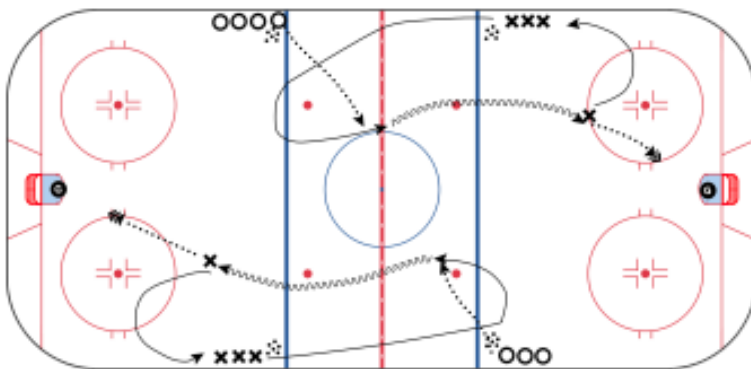
Duration: 38 mins

4 Laps - Hard on the Whistle

4 mins

007 - Basic Shooting Drill - NPHA Assessment

7 mins



Set Up - 4 Lines at Blue Lines facing neutral zone with pucks

- Players in lines diagonal from each other (X's) quick start without a puck to the opposite Blue Line then
 - Cross Overs to loop back toward Red Line
 - Receive a pass from the Player on the same side of the ice (O's)
 - Carry the puck into the Offensive Zone; Shoot from tops of the circle

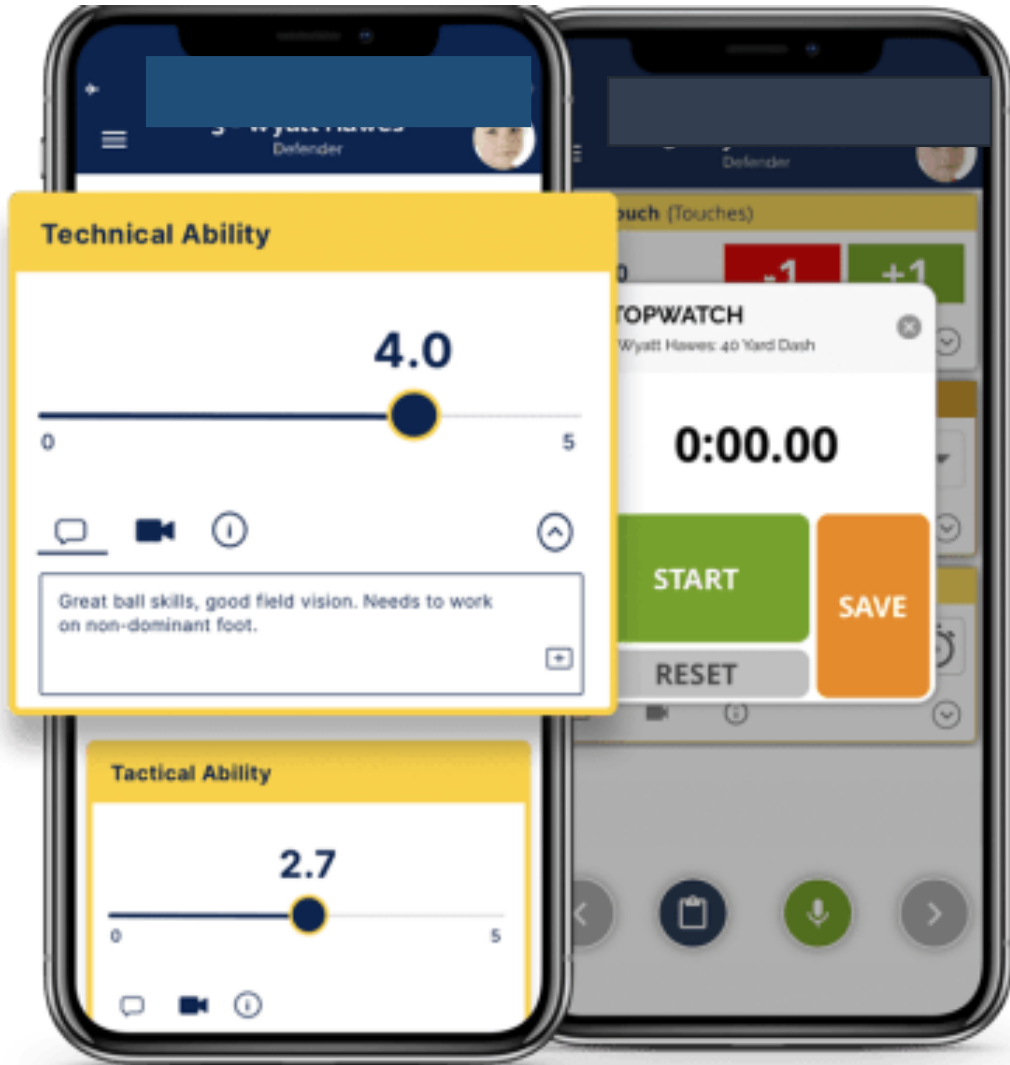
Once the Player in the opposite line passes the puck they start and end shooting at the opposite goal

Key Points

Link to Skills: *Puck Control, Shooting*

Each drill designed to correlate directly to each scoring criteria AND the New Prague player progression model

Inputs:



6-8 evaluators per session & 12 scoring criteria per player
At least 72 scores per player

Output:

	- Skills (Day 1)	- Skills (Day 2)	Scrimmage (Day 3)	
1	85.67	77.22	74.38	77.91
2	76.00	80.83	77.19	77.80
3	80.00	78.06	72.81	75.92
4		62.50	81.88	75.42
5	88.17	81.11	62.19	73.41
6	57.67	75.83	70.00	68.37
7	52.67	72.22	69.38	65.91
8	62.33	62.22	68.12	65.20
9	66.33	58.89	63.75	63.18
10	59.17	57.50	65.00	61.67
11	42.67	55.56	69.06	59.09
12	63.67	61.39	55.62	59.08

Team Genius compiles all scores and totals as a % of total available points with weights shared on slide 1

Frequently Asked Questions

	- Skills (Day 1)	- Skills (Day 2)	Scrimmage (Day 3)	 ↓ ↑
1	85.67	77.22	74.38	77.91
2	76.00	80.83	77.19	77.80
3	80.00	78.06	72.81	75.92
4		62.50	81.88	75.42
5	88.17	81.11	62.19	73.41
6	57.67	75.83	70.00	68.37
7	52.67	72.22	69.38	65.91
8	62.33	62.22	68.12	65.20
9	66.33	58.89	63.75	63.18
10	59.17	57.50	65.00	61.67
11	42.67	55.56	69.06	59.09
12	63.67	61.39	55.62	59.08

So why does the HDC and the board review and approve the teams and not just take the numbers as they come in?

There are several scenarios that require discussion such as:

- Players missing sessions: did we see enough of that player to place?
- Scores are very, very close. Did something happen one of the days that wasn't reflective of that players skills the other 3 days?
- Team size and level requirements from District 6, Minnesota Hockey and NPHA
- Do the scores indicate that we may need to change the level of a team?

Can't the group just override scores and "make" things say what they really want?

- No names or jersey numbers are shown until needed. The scores drive the conversation.
- System has an audit log that tracks all score changes. Shared by system admins to HDC members as a safeguard.
- HDC members with player at the level being reviewed are not in the room, not on the ice during tryouts, not in the conversation about team size, level or anything else until names are revealed and coaches need to be chosen.
- Evaluators do not see each others' scores; they also don't stick around to review the team selection process.
- There are ~12 HDC members and many additional board members representing all levels of NPHA. Every season creates healthy discussion on this process and outcome.

What about goalies, girls and mites?

- We hire a third-party company (MEGA) to provide expertise on goalie evaluations. We are constantly looking for other people to evaluate goalies, but they are hard to pin down.
- Mites and girls all can go through a placement process with scoring in Team Genius.

Do you have a new Mite/8U this season?

- **Raffle calendar** - Families with ONLY a new Mite/8U player need to sell 5 calendars at \$20/calendar. You paid for these at registration, so the money you earn selling these calendars is yours to keep. If you don't want to sell the calendars, be sure to turn in the stubs with your own name on them and you have the chance to win cash prizes.
- **Combination Fundraiser** - This is NOT a requirement for new families, so you do not need to pick up a fundraising packet for the pizzas/cookie dough/wreaths, etc. If you play with NPHA again next year, then you will be subject to this fundraiser.
- **DIBS Hours** - Families are required to complete 22 DIBS hours, this includes new Mite/8U only families. At least 11 of these hours need to be completed in the concession stand, unless you are coaching, managing a team, or serving as a Coordinator or Board member, then you do not need to work the concession stand. Exempt from the 22 hours if you selected and paid for the \$550 DIBS buyout at registration.
- Families are considered a multiplayer family even if their second player is new to the association. Families in this boat will need to fundraise \$900 or select the \$450 buyout. The only families exempt from the combination fundraiser are those that have joined NPHA this year, with no previous players in the program.

Junior Gold

- An option for players who do not make the HS team and have aged out of the Bantam level.
- The Junior Gold (JG) season will begin after the completion of High School tryouts (which are scheduled for mid-November).
- Players interested in joining the JG team can register at any time between now and the start of the JG season.
- No DIBS hours requirement for our JG families who do not have a younger sibling in the hockey program. Thank you for your support all these years!
- Same jerseys as our other upper-level teams.



Fundraising Overview

Christmas Wreaths, Cookie Dough, Heggies Pizza, Firehouse Pizza, & Odenthal Meats

- Each family is required to sell a total \$700.00 per player **or** \$900.00 per family
- Buyout of \$350 for a single player **or** \$450 per family



All Orders Due:
October 26th and 28th



Wreath pickup will be **November 11th**
Cookie Dough, Pizzas, & Odenthal Meats pickup will be at the rink
November 13th

*Waiver of this fundraiser for new families to NPHA

*Families are considered a multiplayer family even if their second player is new to the association. Families in this boat will need to fundraise \$900 or select the \$450 buyout. The only families exempt from the combination fundraiser are those that have joined NPHA this year, with no previous players in the program.

Fundraising



Q: What if I fall short of the required amount to sell?

A family has 2 kids in hockey. They opted to fundraise, a \$900 commitment.

They sold:

\$250 in Wreaths

\$350 in Cookie Dough and Heggies Pizza

Total \$600

A: NPHA profits 50% of fundraising sales and the buyout for a family is \$450. The family came up \$300 short so their invoice would be \$150.

If the fundraiser forms and the money are not submitted by the deadline, your family will be assessed the buyout fees or remaining balance as noted above and payment will be due immediately. Players will not be able to participate until this obligation is fulfilled.

Fundraising

Raffle Calendar Fundraiser

- Each family is required to sell a minimum of 15 calendars
 - The only exception to this are new Mite/8U families, who are required to only sell a minimum of 5 calendars
- The cost of the calendar is \$20 each and are paid for in your registration which can be spread out over 5 months if you choose
- Each calendar you then sell you keep the money so you will just need to return the calendar stubs by the turn in date.

Mandatory for ALL members

Want to **SAVE** even more money???

- You can choose to **sell more than 15 raffle calendars** to help earn more money back.
- You can also **over-fundraise** pizzas, wreaths, etc. to earn more money. Sell more than the required amount, and you get a kick back of 25% of the amount raised over the minimum!



Volunteer Hours

- All families, INCLUDING new families, are required to complete a minimum of 22 volunteer hours. This helps to keep our hockey expenses lower.

- Of the 22 required DIBS hours, 11 must be completed in the Concession Stand
- If you would like to pay someone to work for you in the concession stand, they can be paid hourly. This has increased to \$15 an hour.

- Coaches, Team Managers, Coordinators, & Board Members hours are waived for the season.

- Other opportunities to fulfill your hours include:

- Working the concession stand
- Serving on a committee
- Assistance with fundraising pickup
- Etc.



Volunteer Hours

- DIBS hours fill up fast, please do not delay, sign up for opportunities as soon as possible.
- Families who do not complete their DIBS hours by the end of the season, will be charged at a rate of \$50/hour.
- If you do not wish to complete the 22 DIBS hours, you have the option to pay the volunteer hours buyout rate of \$550 at registration.

Interested in being a Coach or a Team Manager?

- Visit our website,
www.newpraguehockey.com
- **Coaching Application**: Found on the Become a Coach page, which you will find on the Home page under the Coaches Corner tab.
- **Team Manager Application**: Found on the Managers page, which you will find under the Home tab of the website.
- *We want to thank everyone who volunteers! Without your help, this hockey program would not be possible!*



Final Questions???
See a board member
at the season kick off
event September 9th
starting at 1pm and
ending at 4pm.

**Have a Great
Season!!!**

Follow us on Facebook for updates

