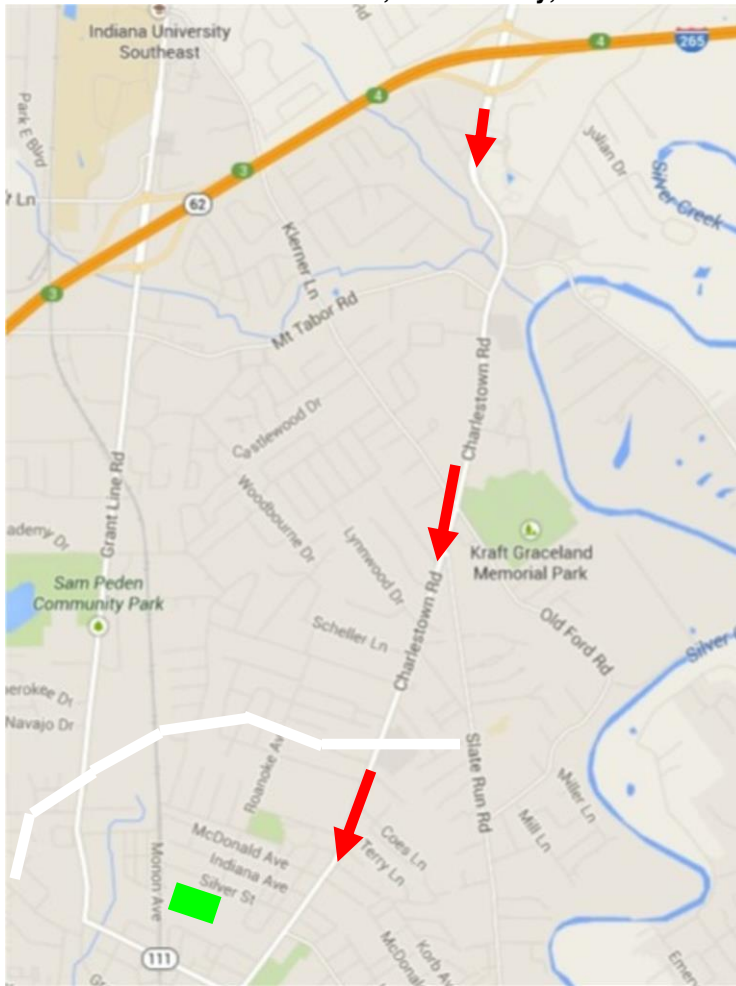
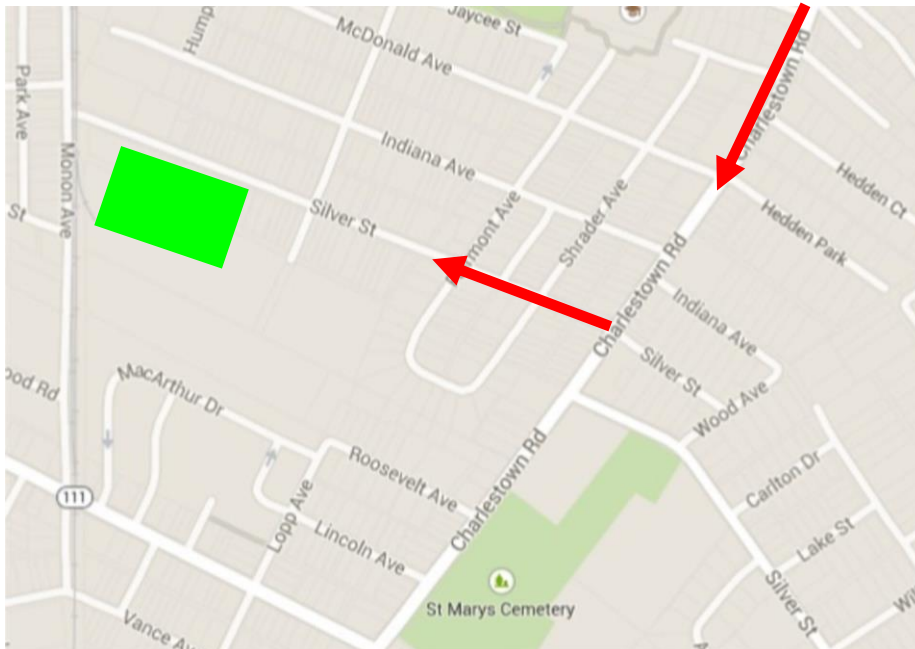


# SIU Silver Street Park Fields

2043 Silver Street, New Albany, IN



- From I265 - take the Charlestown Rd exit.
- Turn South (towards town) onto Charlestown Rd.
- Go 2.7 miles to the section of Silver Street that is between Charlestown and Grant Line Rds.



- Turn right onto Silver Street.
- Go to 2043 Silver Street to the Silver Street Park.