



TABLE OF CONTENTS

Know Your Staff Pg 2

What's New Pg 2

**Nor Cal Umpire Makes
The News In Tenn. Pg 2**

Nor Cal Clinics Pg 3

**Nor Cal Umpire Makes
The News In Little
League Regionals Pg 2**

Safe Sport Pg 3

**Know Your Equipment
Pg 4-5**

**Tournament Calander
Pg 6**

Stump The Ump Pg 7-8



UMPIRE NEWS

May / June 2023



UIC JAMES COLE



Meet Your Staff

Nor Cal Umpire-In-Chief

James Cole

530-415-8795

jcole@inreach.com

District 1 UIC

Jim Rodondi UIC

jimrodondi@comcast.net

Spencer Schulz DUIC

calling002@aol.com

District 2 UIC

TBA

District 3 UIC

TBA

District 4 UIC

Kevin Hager DUIC

kevinhager@comcast.net

District 5 UIC

James Cole UIC

District 6 UIC

James Cole UIC

District 7 UIC

Jeff Pratt UIC

jpratt54@hotmail.com

District 8 UIC

James Cole UIC

District 9 UIC

Jill Suico UIC

ladyuic@comcast.net

Rich Valdix DUIC

richardvaldix@gmail.com

Youth Development

George Carrasco

mdhsmusc@yahoo.com

Uniform Sales

Ed Wong

edwardwong_99@yahoo.com



OUR VERY OWN
UMPIRE **BETH**
CHLOPEK KEEPS ON
WORKING NO
MATTER WHAT.

After moving to Tennessee last year, you just can't keep a great umpire down, no matter what personal problems arise. Go to our main web site to read the full article on Beth. Great job by a great umpire who loves the game!!

Umpire with ALS determined to keep doing what she loves

Beth Chlopek continues to umpire despite not being able to speak because of the disease.



A long time umpire, who despite a terminal illness diagnosis, doesn't plan on hanging up her gear anytime soon.

TRAINING



2023 NOR CAL CLINICS

Clinics for 2023 are finished. If you need a special session or clinic, contact your UIC for details. We can make it happen.

George Carrasco has stepped up and will become the new Youth Development Program UIC for Nor Cal. He will be replacing Stan Angel effective 1 July. I have worked with George for many years. He is a great umpire who loves training and teaching and will have a real effect on our future youth umpires. If you see him on the ball field, introduce yourself and never be afraid to ask for help.

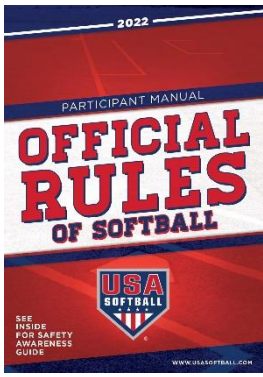


Don't forget Safe Sport when you register. It (and the Federal Government) haven't forgotten you. If you want to work USA and Nor Cal softball, we have to do it. If you need help, my Staff and I will help you get it done.

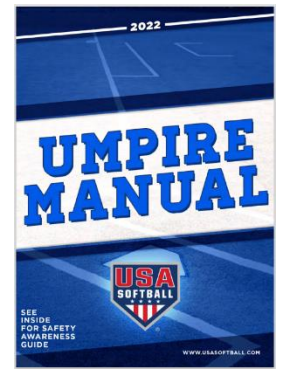


LEAD BY EXAMPLE

Handling video reviews is one of the duties of crew chiefs at certain levels. Jeff Pratt, San Jose, Calif., handles video review during the Little League Softball Regionals. It's important to remain calm and professional when you are the crew chief handling tough situations.



KNOW THE RULES!



KNOW YOUR EQUIPMENT



It's tough to manage a fair game if your teams aren't using current USA Certified Equipment. Whose responsibility is it that Certified Equipment is always used? The Coach? The Manager? The Parents or the Players? Like it or not, if there is ever an injury, a problem or a protest, responsibility always lands on the umpires' shoulders. As a proponent of knowing all the rules and what they say, the reality is it's never going to happen. What we can know is where the information is listed and how to get to it and what can be printed out and kept in our cars for immediate access or reference. Anything you need to know about bats, balls, foreign substance, protective wraps, warm-up attachments and warm-up bats can be found on the USA Softball main Umpire Web Page under Certified Equipment. (See below.)

USA Softball Certified Equipment

USA Softball has taken great strides to protect the integrity of the sport. Each year, USA Softball's Equipment Testing and Certification Committee examines the current rules and specifications governing various items of equipment. This committee makes recommendations to USA Softball's council comprised of USA Softball commissioners, select youth and player representatives, umpire-in-chiefs, elite athletes and other affiliated members. The council is the ultimate decision maker of USA Softball rules and regulations regarding equipment.

*If you are an equipment manufacturer and interested in certifying your equipment, please contact Kevin Ryan (kryan@usasoftball.com).

Equipment - Bats

Equipment - Balls

Non Linear Bat Compression
Thresholds

Bat Testing Educational Video

Fast Pitch Study with Voice Over

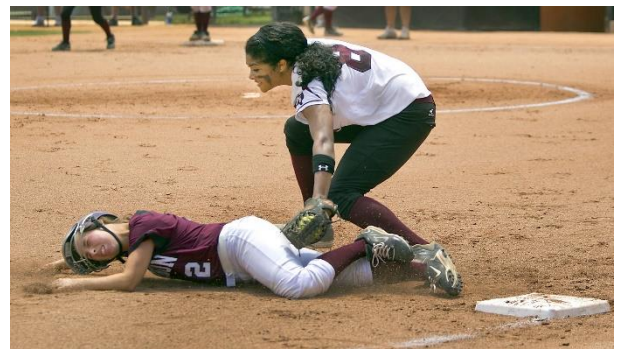
For a complete updated listing of USA Softball certified equipment, click on the appropriate category you are searching for:

- Equipment - Bats >
- Equipment - Balls >
- Foreign Substance/Protective Wraps >
- Warm-up Attachments >
- Warm-up Bats >
- Additional Reference Materials >

THE JO TOURNAMENTS ARE IN FULL SWING



illustrations of.com #1211896



IS YOUR CALANDER UP TO DATE???

Date	Tournament	Location	Division
May 26-28	Jan Macpherson Memorial	San Carlos	8CP,8C,10BC,12BC
June 2-4	Battle Of The Bay	Millbrae	8CP,8C,10BC,12BC,14B
June 3-4	Butterfly Classic	Campbell	10C
June 3-4	Twister Classic	San Jose	8C,10BC,12BC,16B
June 3-4	Livermore Smoke Summer Classic	Livermore	8C,10BC,12BC
June 3-4	CSA June Shootout	Vacaville	10BC,12BC,14B,16B,18B
June 9-11	Nor Cal Association Championships	Salinas	8UC
June 9-11	Bille Sue Memorial Tournament	Burlingame	8CP,10BC,12BC,16B
June 9-11	Manzanita Mayhem	Prunedale	10C,12BC,14B
June 9-11	Wine Country Classic	Windsor	10BC,12BC,14B
June 16-18	PGSA Father's Day Tournament	Petaluma	8C,10BC,12BC,14B
June 16-17	Jan Macpherson Memorial	San Carlos	16B/18B Combined
June 16-18	Bagby Classic	San Jose	8C,10BC,12BC
June 3-4	Livermore Smoke Summer Classic	Livermore	8C,10BC,12BC
June 23-25	Nor Cal Association Championships	Santa Clara	10BC,12BC,14B
June 30-July 2	Santa Rosa Tournament	Santa Rosa	8C,10B,12B,14B,16B
July 1-2	Del Holson Firecracker	Benicia	8C,10C
July 7-9	Marin Tremors Tournament	San Anselmo	8C,10BC,12BC,14B
July 8-9	Blown Away In Benicia	Benicia	8C,10BC,12BC,14B
July 7-9	Pleasanton Summer Classic	Pleasanton	8C,10BC,12BC,14B
July 14-16	RPGSA Rebel Classic	Rohnert Park	8C,10B,12B
July 14-16	Bytheal Ratliff's Blast By The Bay	Santa Cruz	8CP,10B,12B,14B
July 21-22	Bill Bowen Memorial Tournament	Sonoma	8C,10BC,12BC
July 29-30	CSA End of Summer Tournament	Vacaville	8C,10BC,12BC,14B 16B,18B
July 29-30	Strawberry Jam	Watsonville	8C,10BC,12BC,14B
October 6-8	Eric Padett & Bob Midgley Strikeout Cancer Memorial Tournament	Sonoma	8C,10BC,12BC
October 14-16	Alexis Briski Memorial Tournament	Los Gatos	8C,10BC,12BC,14B
October 27-29	Halloween Spooktacular Tournament	Petaluma	8C,10BC,12BC,14B



All plays are for USA Softball. What is the correct result of the play and what is your Rule Reference / Justification?

MAR / APR 2023

PLAY #1: With R1 on first and one out, B3 hits a fly ball to center field that's caught by F8. R1, nearly halfway to second, must return to first base. F8's throw is offline, but F3 catches the ball in her glove hand and, while falling toward first, tags the base with her throwing hand just before R1 slides into first.

PLAY #2: In the bottom of the 7th inning with a tie score, B2 comes to bat with the winning run (R2) on second base. The defensive coach holds a charged conference with the pitcher to discuss strategy. On the first pitch, the ball gets by the catcher and R2 advances to 3B. The defensive coach requests to have another conference at the pitcher's circle.

PLAY #3: With R1 on first and one out, B3 hits a ground ball sharply to right field. R1 touches second and tries to advance to third base. F9 charges the ball, picks it up and throws to third base. The throw hits R1 in the back of the helmet. The ball ricochets off R1's helmet and rolls out of play. At the time of the throw, B1 had not yet reached first base and B1 was between first and second when the ball rolled out of play.

PLAY #4: Thirty minutes prior to the start of a game, it begins raining. As game time approaches, the infield dirt and outfield grass are wet. The home team coach and base umpire want to cancel the game while the plate umpire wants to postpone the game for thirty minutes.

PLAY #5: B1, with count of 1-1, is hit on her hands while swinging and the ball deflects into fair territory. F1 picks up the ball and throws to F3 at first base before time is called.

MAR / APR 2023

PLAY #1: RULING: R1 is out. On a force out at a base, a fielder possessing the ball just needs to make contact with the base to record an out. A runner off base must be tagged by the ball or by the fielder's glove with the ball inside of the glove.

JUSTIFICATION: Rule 8 – 7c

PLAY #2: RULING: It is legal provided the defensive team has remaining defensive conferences.

JUSTIFICATION: Rule 5 – 7b

PLAY #3: RULING: R1 is awarded home and B1 is awarded second base.

JUSTIFICATION: Rule 8 – 5g Effect

PLAY #4: RULING: The game will be postponed 30 minutes. The plate umpire has sole authority to rule on the fitness of the grounds.

JUSTIFICATION: Rule 5 - 2

PLAY #5: RULING: It is a dead ball when a pitched ball that is swung at hits the batter. The ball is dead as soon as it hits the batter and the play at first is negated.

JUSTIFICATION: Rule 7 – 4h

MAY / JUN 2023

PLAY #1: What are the 4 areas that determine if a batter swung at a pitched ball or checked their swing?

PLAY #2: On a 1-2 pitch, with R1 breaking for second on the pitch, B2 swings and nicks the pitch, which goes directly to F2's shoulder pad, pops up in the air and F2 secures the ball with her glove.

PLAY #3: With the bases loaded with two outs, B6 strikes out on a pitch in the dirt. F2 recovers the ball with her bare hand. While trying to get her feet set to throw the ball to first, steps on home plate moments before throwing to first in an effort to retire the batter runner. F2's throw to first is wild and three runs score as B6 advances to second.

PLAY #4: R3 is on third with two outs when B4 hits a ground ball to F6. F6's throw skips past F3 and R3 scores. B4 misses first base and makes second safely. While running the ball back in, F3 inadvertently steps on first base.

PLAY #5: With R1 on first and no outs, B2 hits a fly ball down the right-field line. R1, believing the ball will be caught retreats toward first base. B2, believing the ball will land and thinking a double is an option, sprints out of the box toward first. The ball ultimately drops in front of F9. B2 rounds first and sees R1 trying to stop and reverse direction to now head toward second. B2 ends up having her front foot and torso beyond R1 but has her back leg still behind R1. The base umpire rules B2 out for passing R1.

MAY / JUN 2023

PLAY #1: RULING:

JUSTIFICATION: Rule

PLAY #2: RULING:

JUSTIFICATION: Rule

PLAY #3: RULING:

JUSTIFICATION: Rule

PLAY #4: RULING:

JUSTIFICATION: Rule

PLAY #5: RULING:

JUSTIFICATION: Rule