

# Avera Therapy in Mitchell

Turn to Avera Therapy in Mitchell for your physical, occupational and speech therapy needs.

## Avera Queen of Peace Hospital



Dan Heesch, PT



Jon Kludt, PT



Cheri Knight, PT



Tanya Magee, OT



Taylor Wheeler, OT  
Inpatient/Outreach Manager

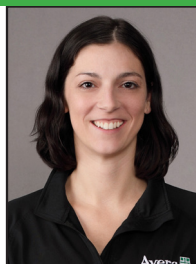


Kennedy Weiland, ST  
ST Clinical Lead

## Avera Brady Health and Rehab



Megan Bosma, PT



Libby Olson, PT  
Post-Acute Manager



Des McIntyre, PTA



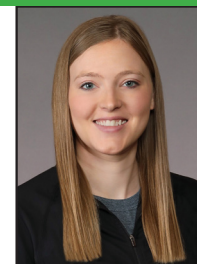
Linda Rose, PTA



Deb Bergeson, OT



Jackie Helling, OT



Jackie Lindeman, OTA

## Avera Therapy – Kimball Street (Outpatient)



Laura Freeman, ST



Matt Bosma, PT



Carly Alley, PT



Amy Knippling, PT



Craig Magee, PT



Christopher Marek, PT  
Outpatient Manager



Gary Mentzel, PT  
Plankinton

## Avera Therapy – Plaza (Outpatient)



Ben Nebelsick, PT



Lexie Schaffer, PT



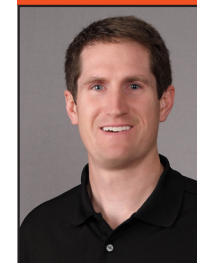
Amy Weier, PT  
Lymphedema



Stephanie Boehnke,  
PTA



Stephanie Flippin, OT  
OT Clinical Lead



Jon Kludt, PT



Jeff Lee, PT

Avera Therapy – Plaza (Outpatient)



Kayla Tolsma, PT



Renee Lentsch, OT  
Driver Rehab Specialist



Becky Weich, OT  
Director, LSVT BIG/PwR!



Kennedy Weiland, ST  
LSVT LOUD



Laura Assmus, PT  
Women's Health



Cheri Knight, PT  
Women's Health



Perry Luna, PT

Avera Therapy – Grassland (Outpatient and Occupational Medicine)

Avera Therapy – Havens Avenue (Pediatrics)



Megan Bosma, PT



Natalie Fischer, OT



Jasmine Fritzmeier, OT



Kendra Abts, ST



Aliece Kardell, ST

Home Health and Outreach



Christine Hildebrandt, PT  
PT Clinical Lead



Nicole Holzbauer, OT



Michelle Kemnitz, OT



Renee Lentsch, OT



Laura Assmus, PT



Libby Olson, PT  
Post-Acute Manager



Deb Bergeson, OT



Erika Clark, OT



Nikki Soulek, OT



Tiffany Stuelpnagel, OT



Ashley DeHaan, ST



Sarah Holloway, ST

**Call your Avera Therapy location in Mitchell today.**

Avera Queen of Peace Hospital: 605-995-2000

Avera Brady Health and Rehab: 605-996-7701

Avera Therapy (all outpatient locations): 605-996-8712



[Avera.org/Therapy](http://Avera.org/Therapy)

THPY-480650

**Also providing therapy services at facilities in these communities:**

Armour, De Smet, Freeman, Gregory, Parkston, Platte, Scotland, Tyndall, Wagner, Wessington Springs