



Woodbury Area Hockey Club

Annual Member Meeting

April 24, 2019



Agenda

Welcome & Introductions

- Thank You Outgoing Board Members: Treasurer – Ben Johnson / VP Administration – Shelly Hansen / VP Girls Hockey – Shawn Shanley
- Welcome New Board Members: Treasurer Tom Och / VP Administration – Ron Tarlton / VP Girls Hockey – Scott Szybatka

Reports –

- 2018-19 Season Financial Summary / Player Counts
- Ice Update
- 2018-19 Surveys *Trending*

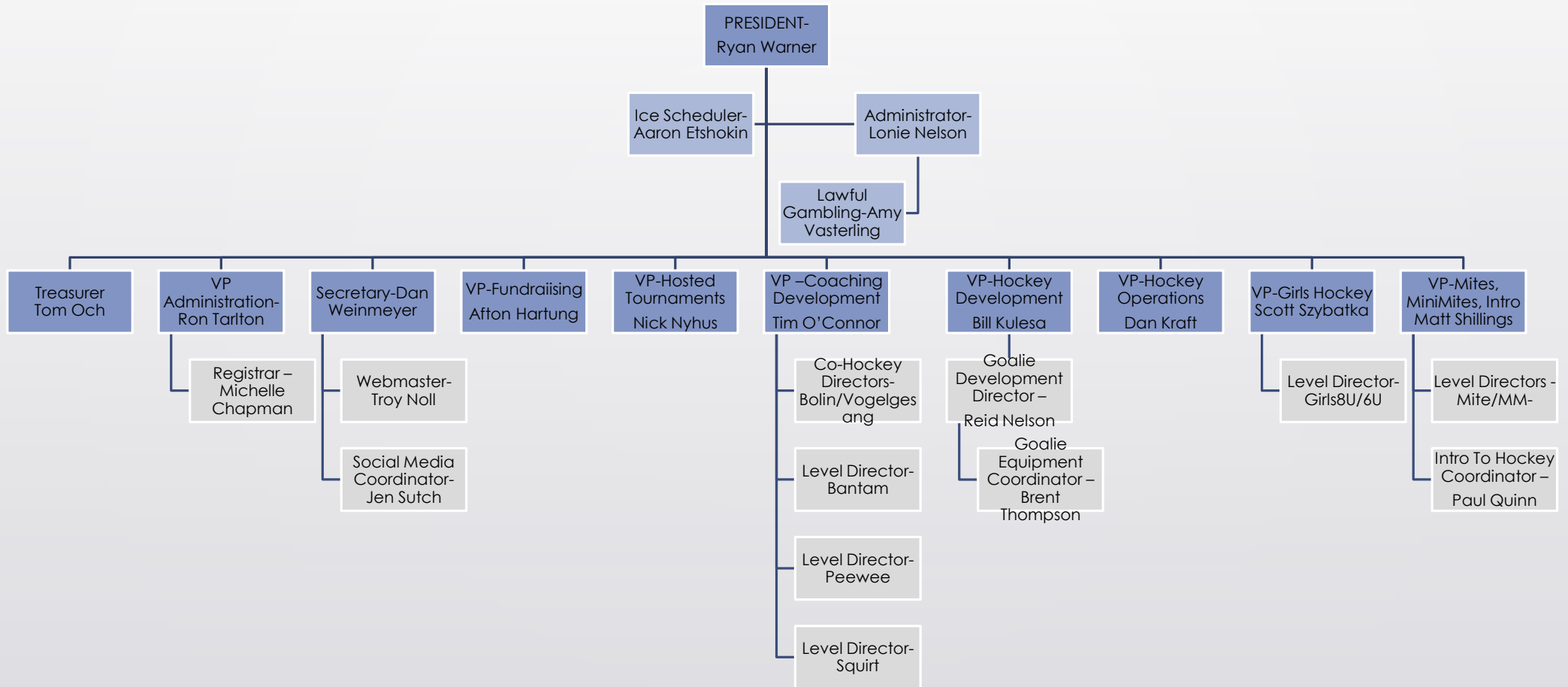
Association Realignment/Split Considerations: Discussion / Q&A

Closing Comments

Welcome & Recognition - WAHC Board




2019-20 WAHC BOARD & LEADERSHIP



WAHC Financial Snapshot

	ACTUAL YTD 2018-19	BUDGET 2018-19	ACTUAL 2017-18	ACTUAL 2016-17
Revenue				
Player Fee Revenue	990,518	1,051,605	978,741	790,694
Hosted Tournaments - Net	10,537	22,250	18,894	3,480
Fundraising - Net	15,239	33,200	17,542	20,514
	<u>1,016,294</u>	<u>1,107,055</u>	<u>1,015,176</u>	<u>814,688</u>
Expenses				
Ice - paid from General Operating Fund	449,303	563,250	528,847	448,206
Operations	482,773	538,310	480,325	381,531
	<u>932,076</u>	<u>1,101,560</u>	<u>1,009,172</u>	<u>829,737</u>
Net Hockey Operations	<u>84,218</u>	<u>5,495</u>	<u>6,004</u>	<u>(15,049)</u>
Lawful Gambling				
Lawful Gambling - Donations	137,327	70,000	62,240	86,810
Projects/Programs Funded by Lawful Gambling -				
Player Socks	(20,000)	(20,000)	(15,000)	(15,015)
Ice	(117,327)	(50,000)	(47,240)	(71,795)
TOTAL WAHC Income	<u>84,218</u>	<u>5,495</u>	<u>6,004</u>	<u>(15,049)</u>
Year End Cash & CDs Balance	509,053		413,912	389,825



WAHC Ice Purchase Summary

2013-14 thru 2018-19

	2013-14	2014-15	2015-16	2016-17	2017-18	2018-19	Average
HealthEast Sports Center (Woodbury)	1293	1296	1244	1316	1463	1440	1342
Harding Arena (St. Paul)	800	808	811	763	785	814	797
Doug Woog Arena (South St. Paul)	449	361	323	383	482	390	398
Other Facilities	19	57	23	29	14	24	28
TOTAL	2561	2522	2401	2491	2744	2669	2565

WAHC Player Counts – By Level of Play

2009-10 thru 2018-19

<i>ALL ROSTERED PROGRAMS</i>										
<i>LEVEL of PLAY</i>	2009-10	2010-11	2011-12	2012-13	2013-14	2014-15	2015-16	2016-17	2017-18	2018-19
Jr Gold/16U	35	36	45	36	35	34	20	0	37	33
Bantam	117	111	104	101	86	93	104	100	95	92
Peewee	131	119	106	115	128	118	96	105	128	119
Squirt	108	132	141	128	110	102	113	110	110	116
Mite	116	121	117	115	119	101	106	117	125	124
MiniMite	106	109	87	92	84	93	104	101	109	109
15U (14U pre2016-17)	17	20	22	24	17	0	0	0	15	17
12U	41	42	38	45	41	25	31	38	48	41
10U	41	45	46	29	30	41	45	35	47	51
Girls8U	27	20	24	29	32	36	25	19	45	50
Girls6U			13	25	23	26	17	29	29	28
TOTAL	739	755	743	739	705	669	661	654	788	780

WAHC Player Counts & Team Counts

YOUTH & GIRLS

2016-17 thru 2018-19

YOUTH & GIRLS PROGRAMS						
	2016-17		2017-18		2018-19	
LEVEL of PLAY	GIRLS	YOUTH	GIRLS	YOUTH	GIRLS	YOUTH
Jr Gold/16U		1		2		2
Bantam		6		6		6
Peewee		7		8		8
Squirt		8		8		8
Mite		9		9		9
MiniMite		9		9		8
Girls 15U			1		1	
Girls 12U	3		3		3	
Girls 10U	3		4		4	
Girls 8U	2		4		4	
Girls 6U	3		2		2	
TOTAL	11	40	14	42	14	41

Total Rostered Teams

51

56

55

YOUTH & GIRLS PROGRAMS						
	2016-17		2017-18		2018-19	
LEVEL of PLAY	GIRLS	YOUTH	GIRLS	YOUTH	GIRLS	YOUTH
Jr Gold/16U		0		37		33
Bantam		100		95		92
Peewee		105		128		119
Squirt		110		110		116
Mite		117		125		124
MiniMite		101		109		109
Girls 15U			15		17	
Girls 12U	38		48		41	
Girls 10U	35		47		51	
Girls 8U	19		45		50	
Girls 6U	29		29		28	
TOTAL	121	533	184	604	187	593

Total Registered Players

654

788

780



WAHC By High School Boundary ERHS/WHS/Other

- See D. Kraft 2018-19 WAHC By High School graphs