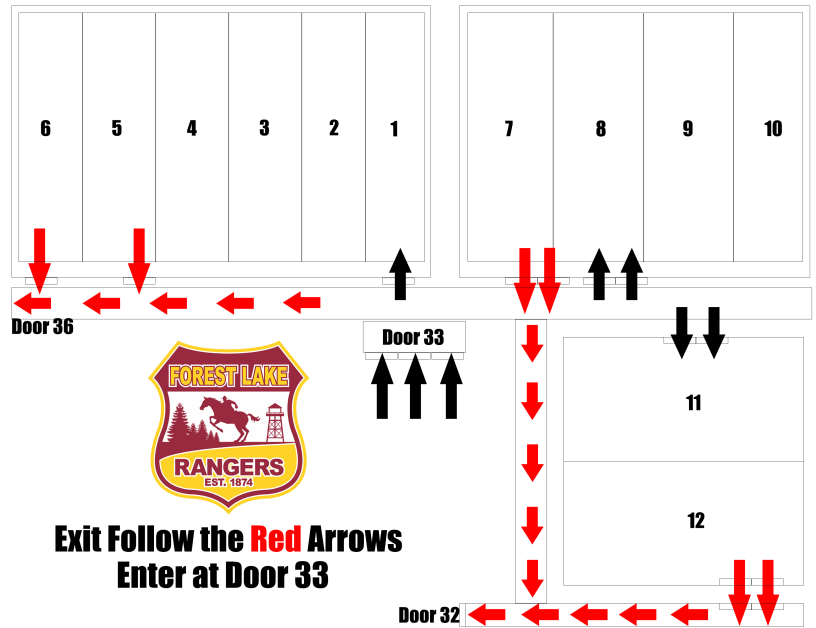




- All games will be at Forest Lake HS. Enter through Door 33.

- Only one representative will be allowed inside to buy tickets for the team. That representative will also be asked to leave a phone number for us to text when their court is ready.

- Teams will get 3 free wristbands for coaches/clock/scoresheet. In addition to the 3 free wristbands, teams will have the option to buy up to 15 wristbands. Wristbands will be \$10 each. Cash or check will be the payment options. Checks will be payable to MN Heat Events. You must have a wristband to enter the facility. Anyone in Kindergarten or older will need a wristband and will count towards the group. Again one person per team will be able to purchase tickets for the group, we will not be selling individual wristbands.



- If you have multiple kids playing on multiple teams, you will only need one wristband but you will count in the number of fans for both teams so keep that in mind when it comes to wristband allocation.
- Players, fans and coaches will all be able to enter when the team representative receives the text saying the group may enter. It is the team rep responsibility to communicate this to the rest of the team. **Do not enter the facility prior to receiving this text.**
- We will not be temp checking this weekend, each group member of the group should be self-evaluating for Covid symptoms.
- Everyone entering the facility must wear a mask and the mask must be worn for the duration of time in the building.
- After your team's game, you must leave the facility immediately. An exception to this is if your team is playing back to back.
- You will not exit the door you came in.
- New Fieldhouse Groups (Courts 1-6) will exit Door 36 (down the fall from courts 5-6)
- Old fieldhouse (courts 7-10) and varsity court (courts 11-12) will exit through Door 32.
- Water fillers will be on this weekend.
- There will be no awards for this event.
- **Forest Lake is one of the only facilities allowing gym rentals in the north metro. If we want to continue to use this facility, the rules must be followed**