

Middle Split (BLOB)

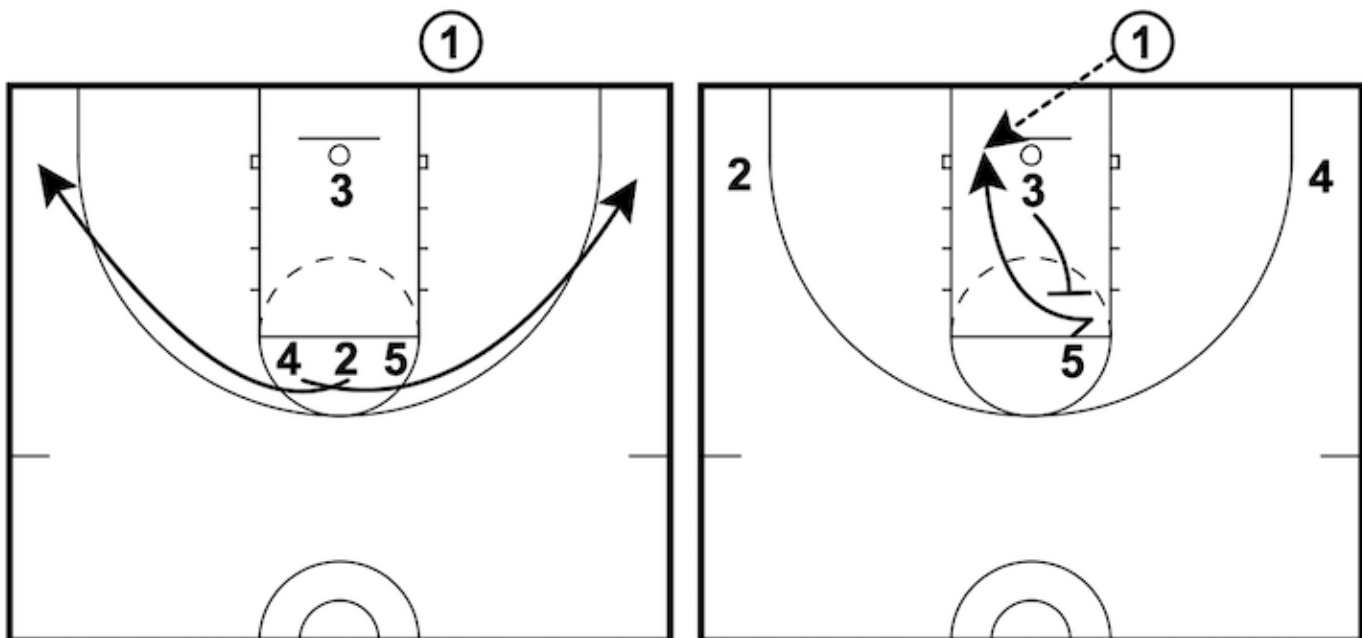
Overview of the Play:

This basketball inbounds play from the baseline is designed to quickly get the team's strongest post player (or a player with a significant mismatch) close to the basket for an inbound pass and finish.

Key Personnel:

- 5 should be the team's strongest post player.
- 3 should be the player capable of setting a strong screen.
- 1 should be the team's best passer.

Instructions:



Setup: The play starts with three players across the free-throw line and one player under the rim with the team's best passer throwing the ball in.

1. The play starts with 2 and 4 cutting opposite directions to behind the three-point line to drag their defenders away from the middle of the key.
2. As this is happening, 3 sets a screen for 5.
3. 5 must read the two defenders and cut towards the hoop looking to receive the pass from 1.
4. 3 will then pop out to the top of the key as an outlet pass in case 5 isn't open or can turn to face the basketball and finish inside too.'

Coaching Points:

- It's very important that none of the player give away where they're going to cut too early. Get players to face different directions to throw the defense off.
- As long as everyone knows which player will receive the screen at the free-throw line, encourage some movement to keep the defense on their toes.
- 3 must set a strong screen and hold it until 5's defender has evaded it.