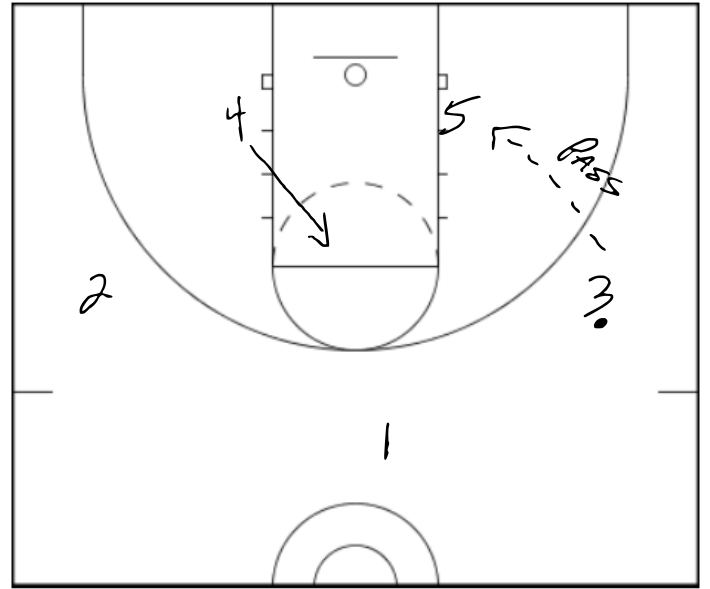
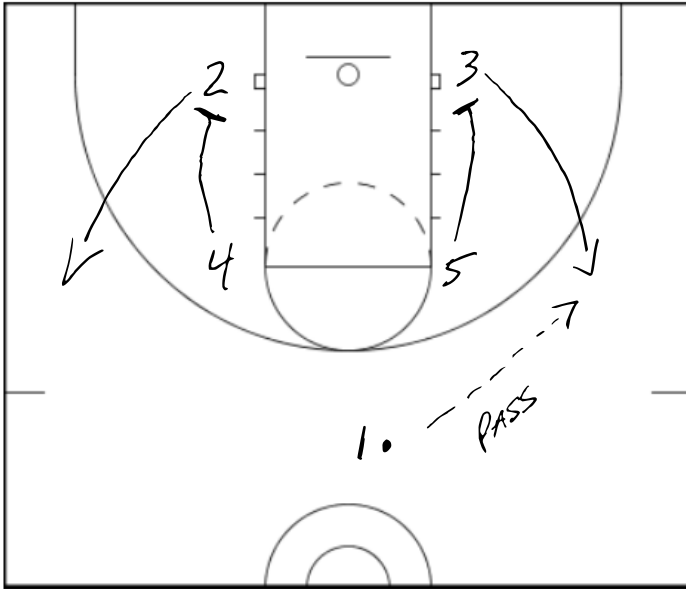


Box 2



Notes: SETUP: BOX FORMATION

- PLAYERS 4 + 5 SET DOWN SCREENS FOR 2 + 3
- 2 + 3 COME UP TO THE WING POSITION FOR A PASS FROM 1
- PLAYER 2 OR 3 MAY HAVE AN OPEN SHOT
- IF NOT, PLAYER 4 OR 5 POST UP AND LOOK FOR A PASS INSIDE FROM THE WING.
- PLAYER 4 OR 5 OPPOSITE THE BALL FLASHES TO THE FREE THROW LINE.