



ESTABLISHED 1957

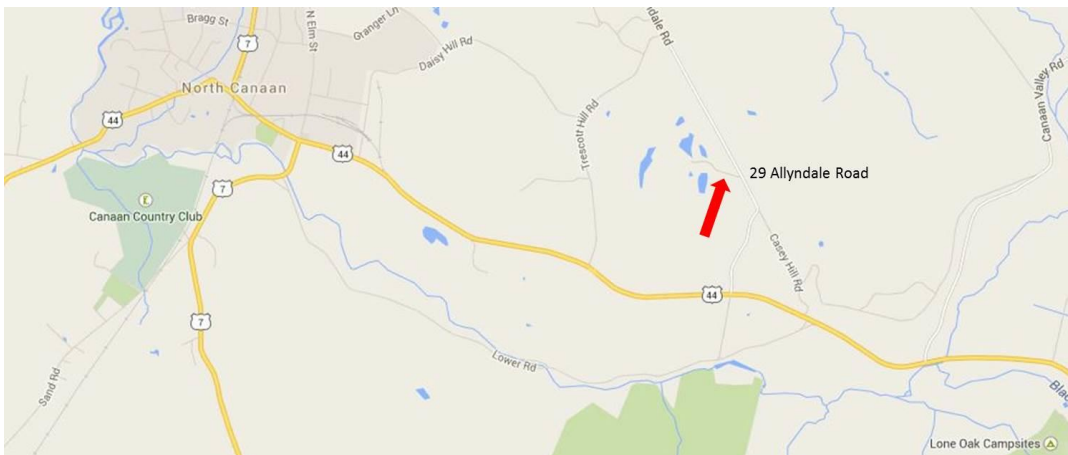
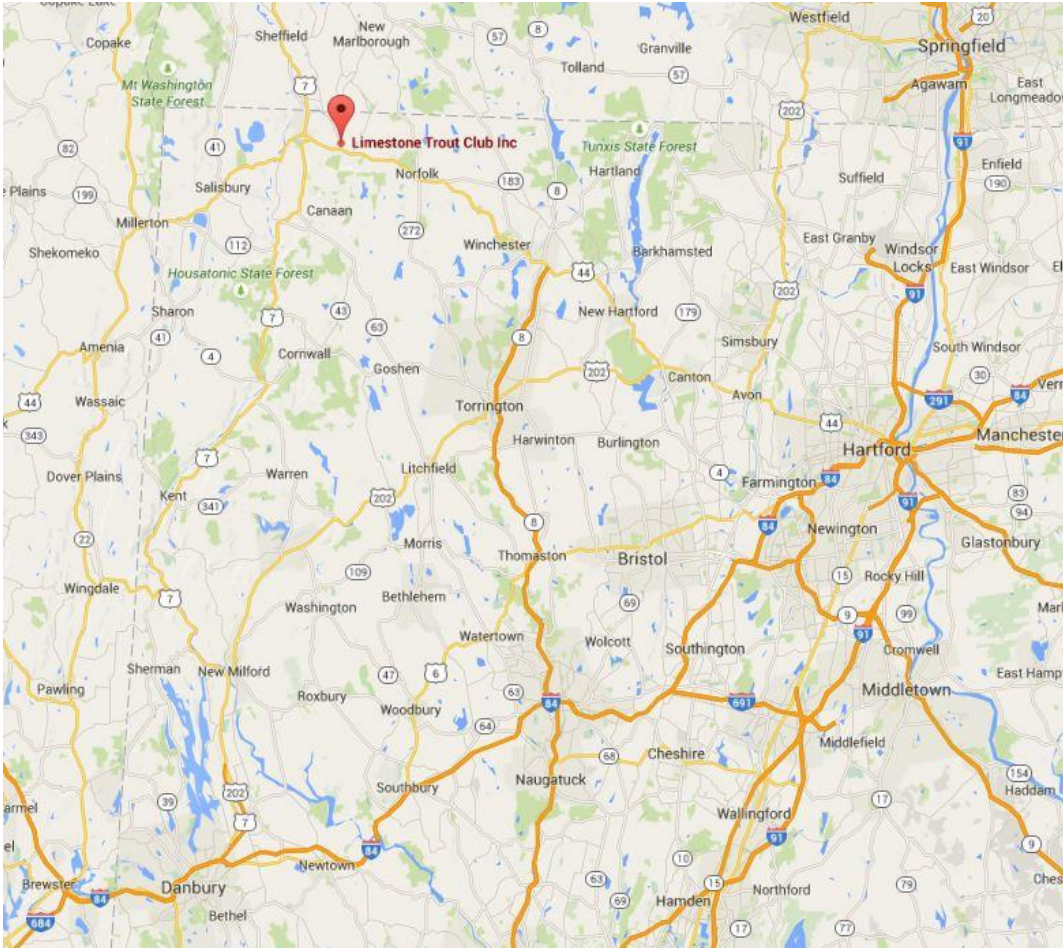
LIMESTONE TROUT CLUB, INC.

Location:

29 Allyndale Road
Canaan, Connecticut

Mailing Address:

173 Prospect Street
Torrington, CT 06790



From Hartford (40.3 miles/1 hr 2 min)

- Follow US-44 W for 40 miles – Turn right to Casey Hill Road
If you miss this turn take next right which is Allyndale Road
- At the stop sign continue straight onto Allyndale Road
- Entrance to club is gravel drive on the left opposite Quarry View Golf Course

From Danbury Mall (1 hr 20 min)

- Via CT-8 (4 lane - 71.3 miles/1 hr 20 min)
 - I-84 E to CT-8 N – Exit left at Waterbury (Exit 20)
 - CT-8 N to US-44 W (Winsted - 4 lane ends- Right hand turn to go west)
 - Follow US-44 W for 15 miles to Casey Hill Road - Right
If you miss this turn take next right which is Allyndale Road
 - At the stop sign continue straight onto Allyndale Road
 - Entrance to club is gravel drive on the left opposite Quarry View Golf Course
- Via US-7 N (Scenic – 57.3 miles/1 hr 16 min)
 - I-84 E to US-7 N (exit 7 – left exit)
 - US-7 N to US-44 E (North Canaan – right turn)
 - Follow US-44 E for 2.7 miles to Allyndale Road - Left
If you miss this turn take next left (Casey Hill Road) which connects with Allyndale Road
 - Follow Allyndale road for ½ mile
 - Entrance to club is gravel drive on the left opposite Quarry View Golf Course

From Greenwich (101 miles/1 hr 50 min)

- I-95 N to CT-8 N (Bridgeport/exit 27A for CT 25/8 toward Trumbull/Waterbury)
- CT-8 N to US-44 W (4 lane ends- Right hand turn to go west)
- Follow US-44 W for 15 miles to Casey Hill Road - Right
If you miss this turn take next right which is Allyndale Road
- At the stop sign continue straight onto Allyndale Road
- Entrance to club is gravel drive on the left opposite Quarry View Golf Course

From New York City (2 hr 20 min)

- From NYC get on I-684 N
(either from Saw Mill River Pkwy or Cross County/Hutchinson River Pkwy)
- Continue onto NY-22 N at Brewster
- NY-22 N and US-44 E Merge at Amenia
- At Millerton follow US-44 E (right) for 14.5 miles to Allyndale Road - Left
If you miss this turn take next left (Casey Hill Road) which connects with Allyndale Road
- Entrance to club is gravel drive on the left opposite Quarry View Golf Course

From Boston Area (Intersection of I-90 and I-395)

- Via I-90 W/I-84 W (95.9 mi/1 hr 51 min)
 - I-90 W to I-84 (exit 9)
 - I-84 to US-44 W (exit 50)
 - Follow US-44 W for 40 miles to Casey Hill Road - Right
If you miss this turn take next right which is Allyndale Road
 - At the stop sign continue straight onto Allyndale Road
 - Entrance to club is gravel drive on the left opposite Quarry View Golf Course
- Via I-90/US-7 S (107 mi/1 hr 52 min)
 - I-90 W to US-20 E (exit 2) - Left
 - US-20 E to MA-102 W – 1st right
 - MA-102 W to US-7 S – Left
 - Merge with US-44 E in North Canaan
 - Follow US-44 E for 2.7 miles to Allyndale Road - Left
If you miss this turn take next left (Casey Hill Road) which connects with Allyndale Road
 - At the stop sign continue straight onto Allyndale Road
 - Entrance to club is gravel drive on the left opposite Quarry View Golf Course