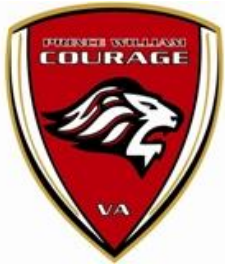


Fall 2017 Coaches Online Meeting

*Prince William Courage makes
meaningful contributions to the
community through the game of
soccer.*

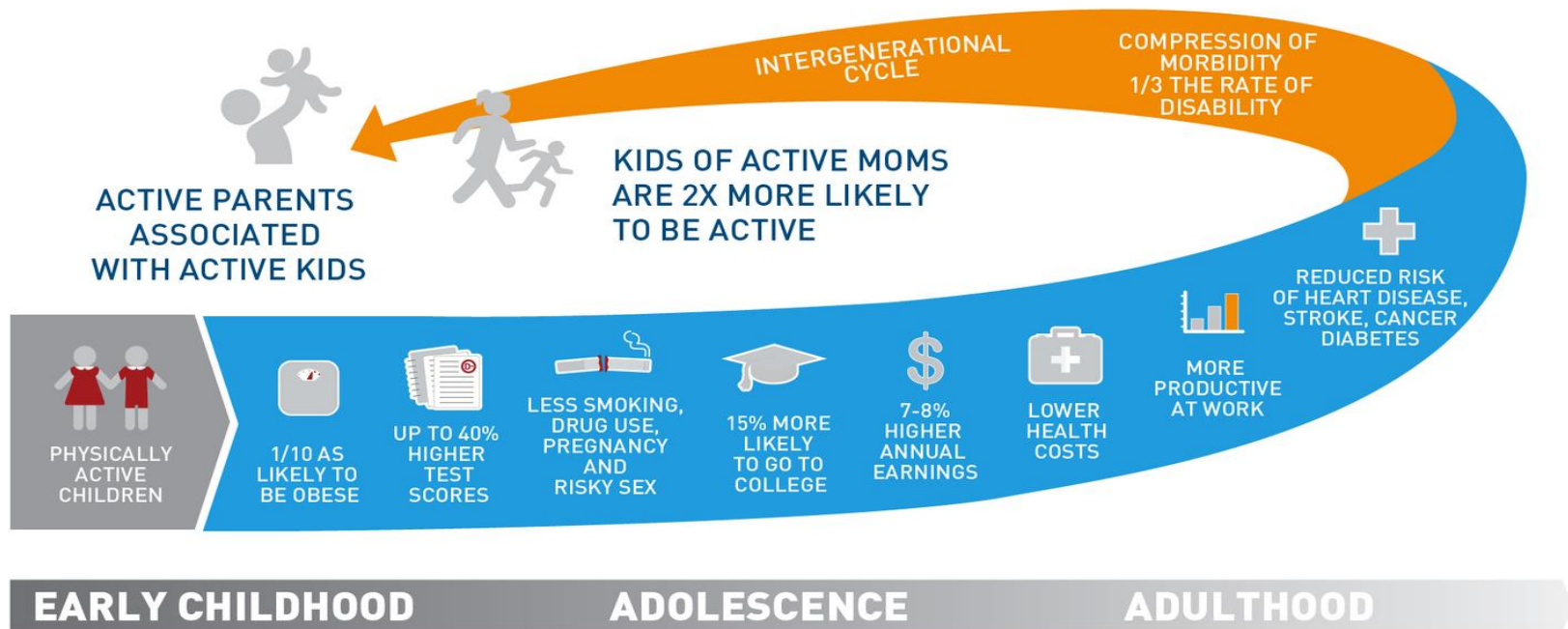


Agenda

- Club Updates
- Introductions
- Important Dates
- Field Information
- Practice Information
- Web Information
- On Field Training
- Equipment
- Positive Coaching Alliance (PCA) Seminars
- Next Steps



Benefits of Sports





Club Updates

- Ali Krieger Park - Under construction; more info coming



Introductions

- House Commissioners - Bob McCauley/Jenise Mancini
- Jeff Broderson – Director of Marketing and Outreach
- Roll call of LDs
- DC United?



Important Dates

- Initiate player contact upon roster receipt
- August 25 -- Schedules posted
- September 1 – Field permits effective
- September 2 – PWSI Day at Dick's Sporting Goods
- September 9 – Games begin
- September 23/24 – Memory Makers pictures (location TBD)
- October 7 – No regular season games (Columbus Day weekend)
- November 4 – Last regular season games (no games Columbus Day weekend)
- November 18/19 – Herndon All Star Tournament



Field Information

- Hylton B & G Club
 - 4U Saturday; 5U/6U Sunday
- Fred Lynn Middle School
 - 7U/8U – Saturday
- Howison
 - U9/U10/U11/U12 – Friday 11UB and 12UB/Saturday all others
- Chinn/Veterans – SFL Saturday
- Rainouts - Games will be rescheduled for the following weekend on the opposite day at the same time, except SFL



Practice Information

- Fields determined by County and listed on field permit
 - County prohibits practicing before September 1
 - Field permits emailed
 - Always have a copy with you



Web Information

- Check PWSI website for:
 - Game day rules
 - Recreational Manual
 - League director contact information
 - Training form for practice sites
 - Notification of weather-related field closings
 - Rainout procedures

Outreach to Players & Coaches

- Tim Lucas – Director of Coaching Education
 - On-field training
 - On-line training (coming soon)
- Gabe Portillo – Director of Youth Development
 - Player training and development
- Jeff Broderson – Director of Outreach
 - Social media, Website
 - Assists in connecting programs



Next Steps

- Receive roster
 - Contact players
 - Determine practice schedule
 - Team meeting
 - Ask parents for help
 - Use resources – LD, Director of Coaching, other experienced coaches
- On field training
- Equipment
- PCA Seminars
 - Dates TBD



Recreational Commissioners

Points of Emphasis

- Field setup requirements
- Coaches Responsibility for Players and Spectators
- Treatment of Referees
- 12U Headers allowed



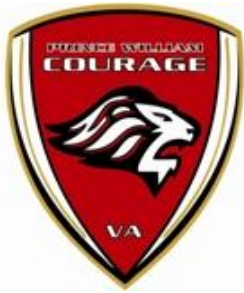
Questions?

Thank you!



BACKUP CHARTS

PWSI MODIFIED RULES HIGHLIGHTS



Summary of PWSI Modified Laws Fall 2017

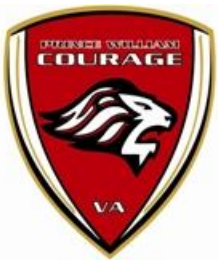
- Definition of technical area at Howison Park (chart 2).
- Outside of the fences, spectators must remain clear of the area behind the goal defined by the width of the protective netting preventing the ball from leaving the field of play.
- 9U and 10U rules are aligned.
 - 9Us now have Direct Free Kicks and Penalty Kicks
- 9U and 10U age groups will play 7 v 7 and 30 minute halves.
- 7U and 8U rules are aligned. Referees will now be used at 7U.
- Establishment of a minimum number of players by age group.
- VYSA Heading Rule (chart 7).



PWSI Modified Laws (cont'd)

Special Notes:

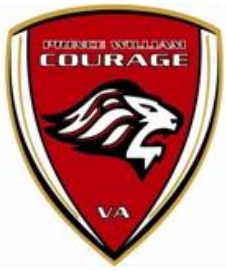
- (1) Mercy Rule: Team may add a player after trailing by **four** goals and add an additional player should it fall behind by **five** goals. If the trailing team scores to reduce the deficit to three or four goals respectively, it must reduce its player numbers by one. Leading teams should never play below its authorized number of players.
- (2) 7U/8U: No goalkeeping or protecting the goal allowed (to be managed by the coaches)
- (3) 7U/8U: Teams are to be positioned on opposite sides of the pitch
- (4) 7U/8U: Indirect kicks for fouls or calls within the penalty area should be taken outside the penalty area to prevent injuries to defensive players
- (5) Penalty kicks are employed at 9U, 10U and 12U
- (6) 9U-12U: The technical area for coaches and players is defined as being outside of the quarter circle on the team side of the center half line (see exhibit on chart 2) and north of the penalty area (18 yard line). Team officials and players are to stay outside the center circle unless players are ready to be substituted. When ready for substitution, players should stand off the pitch at the center line.



PWSI Modified Laws (cont'd)

Special Notes:

- (7) No spectators are allowed within the fenced-in areas of Howison. Only players and team officials are allowed within the fences. Outside the fence, spectators must stay clear of the area behind the goals for the full width of the net preventing the ball from leaving the fields of play.
- (8) Coaches are responsible for their team's spectator behavior.
- (9) **Minimum player numbers** have been defined as **three (3) for 7U and 8U** and **six (6) for 9U through 12U**. To play a game, teams must meet these minimum numbers.
- (10) Substitutions, Standard Youth Exceptions (SYE): Prior to a throw-in by the team in possession. If the team in possession requests a substitution, then both teams can sub if they are ready at the midfield line; also, teams can substitute as follows:
 - Prior to a goal kick by either team;
 - After a goal by either team;
 - At half-time or quarter break by either team;
 - After a player has been cautioned; or,
 - After an injury.



PWSI Modified Laws for Fall 2017

LAW	7U and 8U	9U	10U	11U and 12U
Law I – The Field				
A. Field Size (yds)	30 x 35	40 x 72	50 x 75	55 x 75
B. Goals (ft/yds)	4 x 6'	18 x 6'	18 x 6'	18 x 6'
Law II – The Ball	Size 3	Size 4	Size 4	Size 4
Law III – Players				
A. On Field	4 v 4	7 v 7	7 v 7	8 v 8
B. Minimum #	3	6	6	6
C. Substitutes	Any stoppage	SYE	SYE	SYE
D. Goalkeeper	No	Yes	Yes	Yes
Law IV -- Equipment				
A. Shoes	Cleats or Tennis Shoes	Cleats or Tennis Shoes	Cleats or Tennis Shoes	Cleats or Tennis Shoes
B. Players' Equipment	Shinguards, No jewelry	Shinguards, No jewelry	Shinguards, No jewelry	Shinguards, No jewelry
C. Home Uniform (jerseys/socks)	Red/Red	Red/Red	Red/Red	Red/Red
D. Away Uniform (jerseys/socks)	White/Black	White/Black	White/Black	White/Black

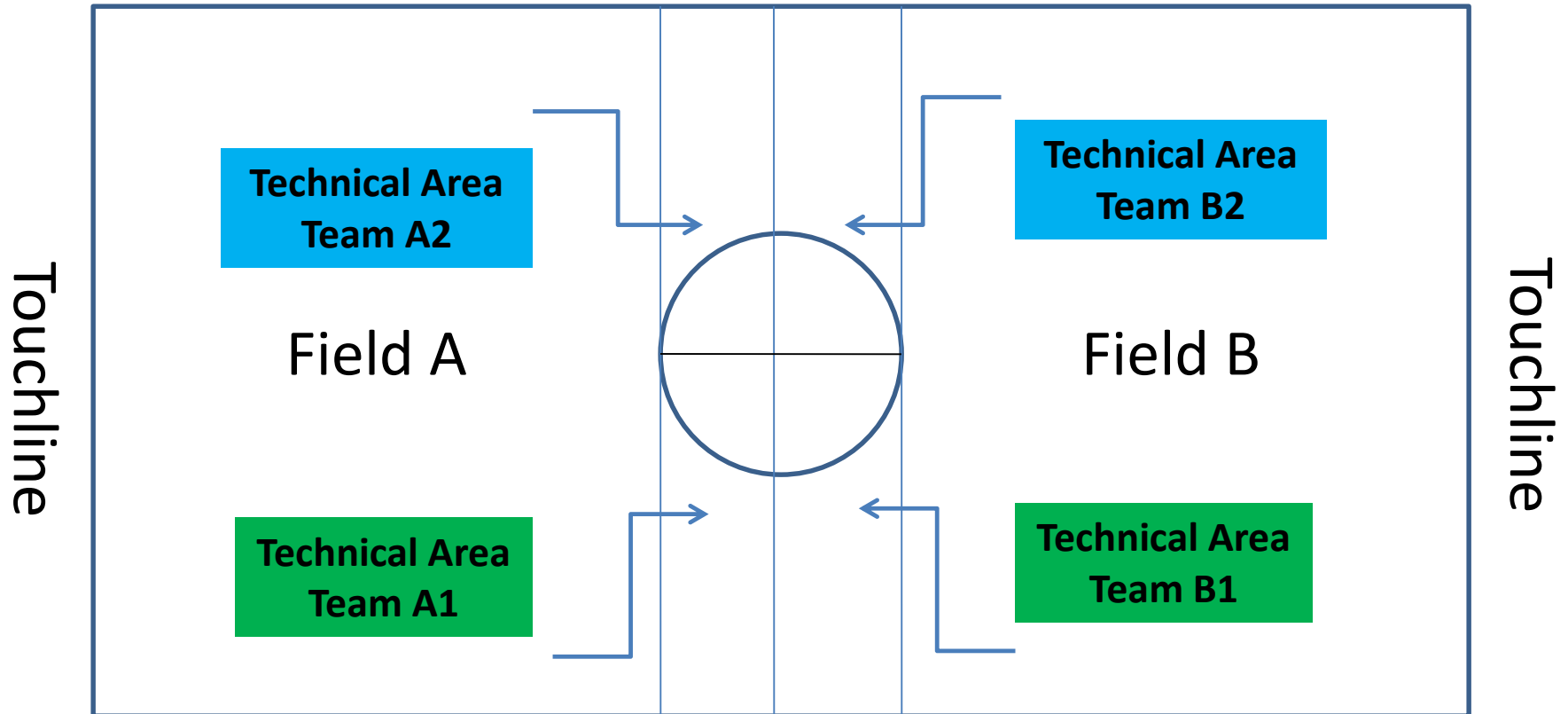


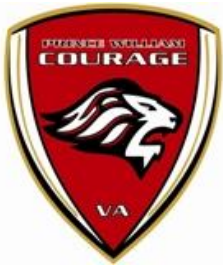
PWSI Modified Laws (cont'd)

LAW	7U and 8U	9U	10U	11U and 12U
Law V – The Referee	Center referee	Center referee	Center referee	Center referee
Law VI – Assistant Referees	None	None	None	Two Asst Referees
Law VII – Game Duration	4 x 12'	2 x 30'	2 x 30'	2 x 30'
Law XI – Offside	N/A	N/A	N/A	Yes
Law XII – Fouls and Misconduct				
A. Slide Tackling	No	Yes	Yes	Yes
Law XI – Offside	N/A	N/A	N/A	Yes
A. Distance from Kicks	4 yards	8 yards	8 yards	8 yards
Law XIV – Penalty Kick	No	Yes	Yes	Yes



Illustration of Technical Area





VYSA Heading Rule

- With the division of the 11U and 12U age groups, there will be heading allowed at the 12U age group. However, coaches should not practice heading as that is not permitted until 13U. Coaches are not to practice heading through 13U.
- For 11U age groups and below, whenever ball strikes a player in the head, play is stopped.
- Restart depends on whether player deliberately played the ball with his/her head.
- If deliberate, opposing team will take an indirect free kick from the point of where this contact occurred, except if it occurs within the goal area.
- If inadvertent, play is restarted with a drop ball at the point where contact occurred, except if it occurs within the goal area.
- For specific rule and guidance, please see: www.vadcsoccerref.com



Special Interest Item

Keeping Games on Schedule

- In recent seasons, we have had a difficult time keeping games on schedule, especially at Fred Lynn Middle School for 7U/8U matches.
- This problem also can occur at Howison Park – in either case, late games cause ripple effects throughout the day/evening.
- ***Bottom Line*** – games need to begin and end **on time**!
- To meet this objective, referees, supported by team coaches, will determine at the outset of the match how much time is available per half or per quarter to ensure the game ends on time. This will result in a shortening of playing time if the game starts late.
- It is critical teams arrive at least 30 minutes before game time so that kickoffs can begin as scheduled. This is especially true for field setup at the beginning of the day/evening both at Fred Lynn and Howison!