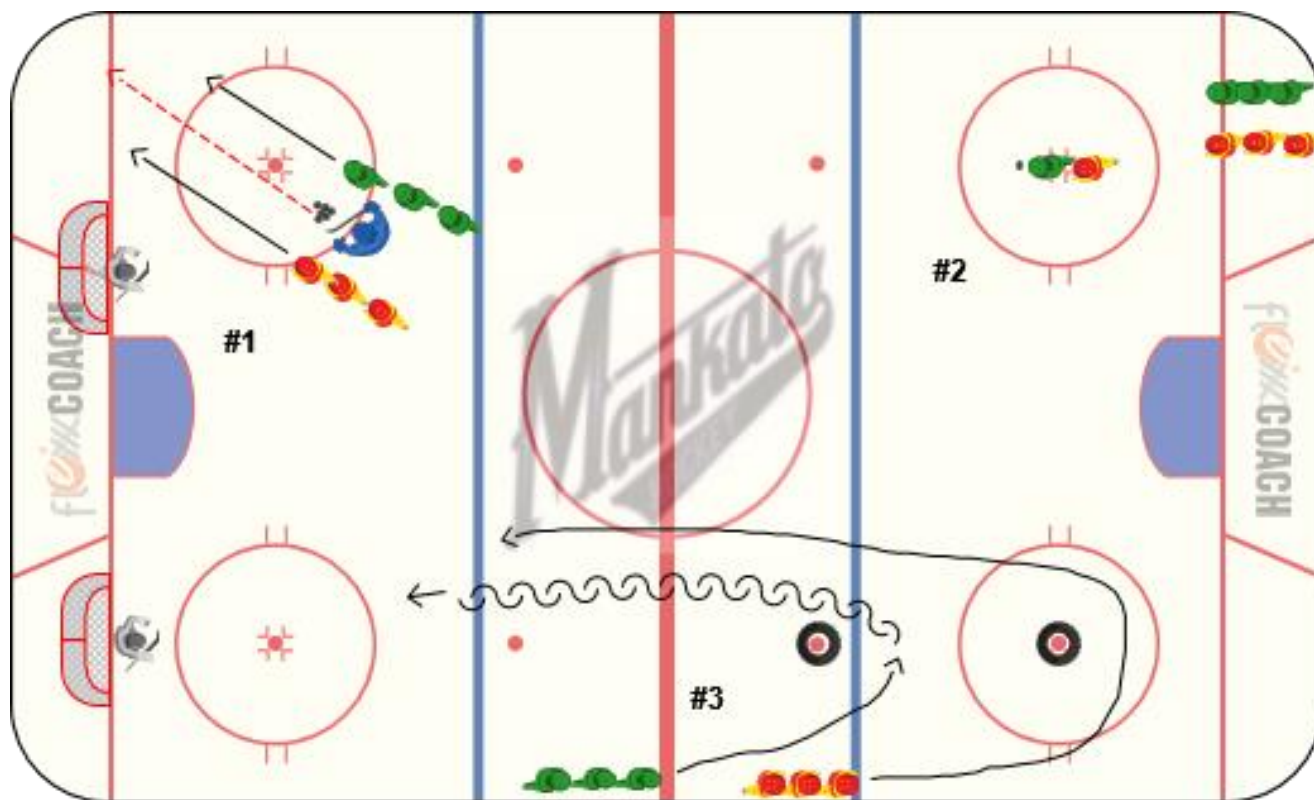


## Placements Day #2 (Bantams)

### Equipment Needed:

- 3 nets, 2 tires



### Stations:

#### #1 1v1 corner angle

Puck dumped in and battle for possession to score

#### #2 1v1 puck protection

1 player starts with puck and plays keep away inside circle

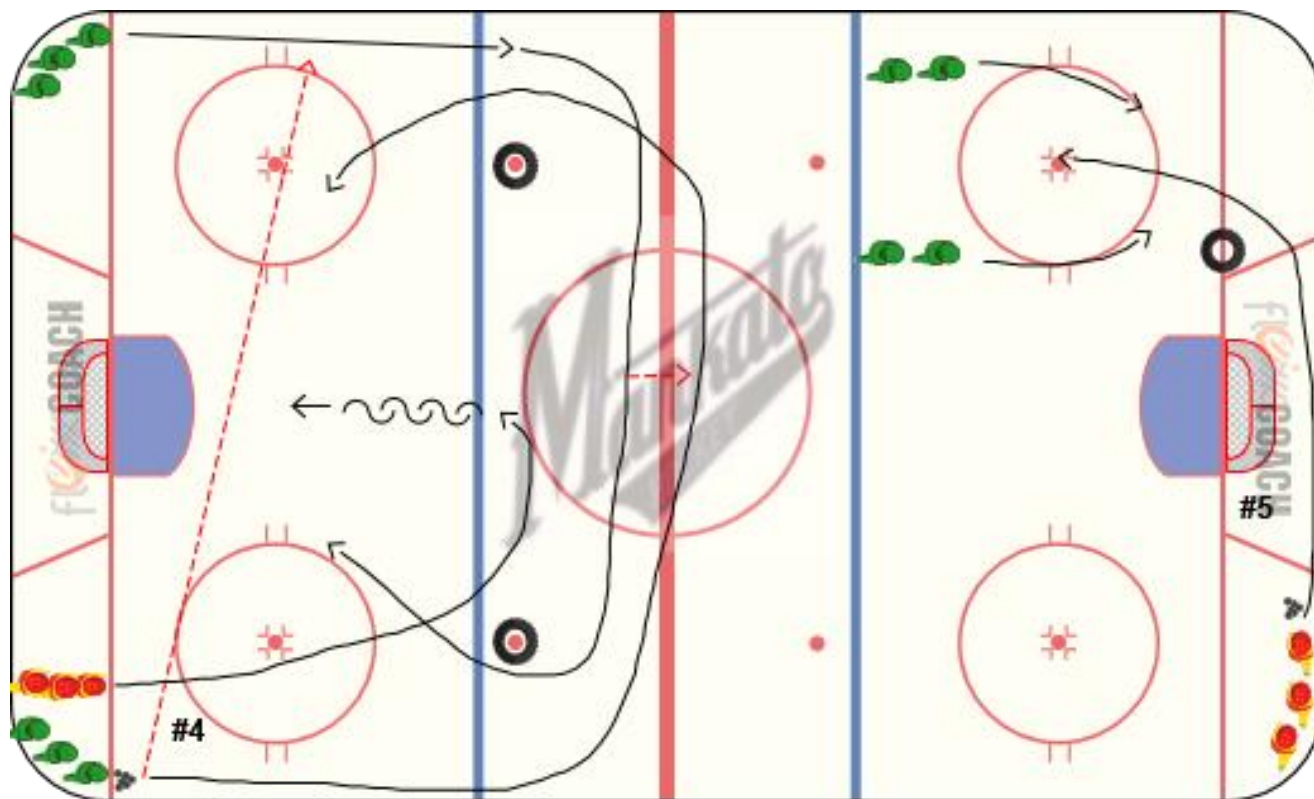
#### #3 1v1 gap – switch directions half way

forward leaves with puck, defense gaps up and plays 1v1 to net

## Placements Day #2 (Bantams)

### Equipment Needed:

- 2 nets, 2 tires



### Stations:

#### #4 2v1 with drop pass

Cross ice pass then drop pass in neutral zone, Defense moves up with play and gaps for 2v1

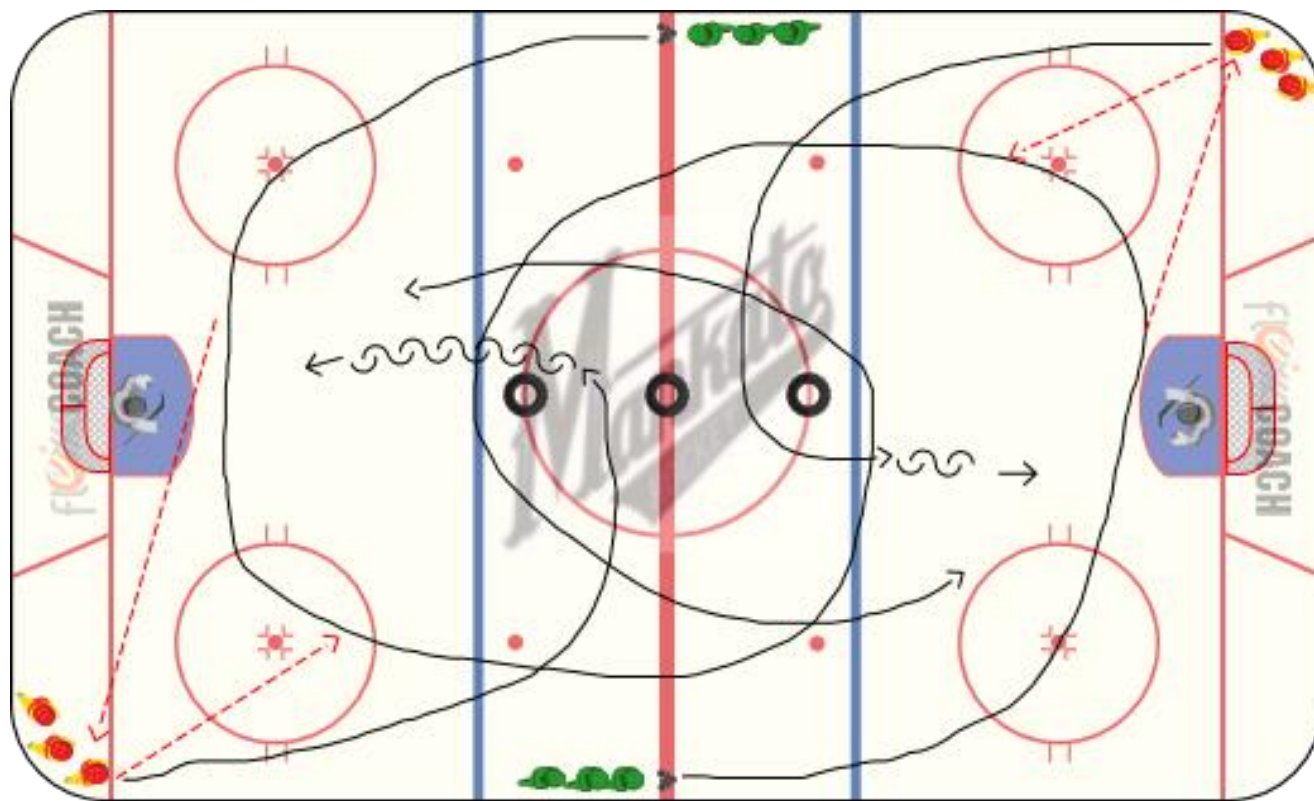
#### #5 2v1 pinch

Defense goes behind net with puck and must go past tire, trying to skate puck out of zone, 2 forwards pinch trying to get puck and score.

## Placements Day #2 (Bantams)

### Equipment Needed:

- 2 nets, 3 tires



### Stations:

#### #6 1v1 & 2v1 big ice

Runs out of both sides. Forward passes to Defense in corner and gets pass back then builds speed through neutral zone with Defense coming up with play and getting gap control. After 5 minutes add 2<sup>nd</sup> forward, after 5 minutes switch sides for opposite direction.