

WCYHA Scoreboard Instructions

Turning ON and configuring

To turn the scoreboard on, there is a switch on the right side of the control box, toggle to ON position.

See Diagram 1-H

You will be asked to "Start where turned off last?" **Under normal circumstances answer NO.** If there was an interruption to the clock, i.e., a power outage, answer YES.

You may be shown, "Do you want to use a Bookmark" answer No.

You will be shown, "I am your Nevco MPC-6 ... Enter your model code" -> Enter 871 You see HOCKEY

You will be asked "Do you want to operate wireless", answer YES.

The control will prompt to SELECT GROUP, "SCOREBOARD 4770" should appear, answer YES.

You will be asked "Do you want to use penalty timeout" ****If your game is using a running clock (meaning the clock will not stop on whistles) and you want penalty time to stop during a stoppage in play, answer YES**** For normal WCYHA games we stop the clock on whistles so answer NO.

Setting the time

Press Set->Time You see SET MM:SS.s

For 12 minutes:

Press 12 You see SET 12:SS.s

Press Yes You see PERIOD 0

Press 1 (Or appropriate period #) You see 12:00.0 DN

- To start the time, flip switch on hand control (See Diagram 2-N)
- To stop the time, flip switch on hand control (See Diagram 2-N)

At Any time to return control box to display clock time, press the Time button

Changing Score

Home Score

Press Home Score You see HOME XX+ ****XX = current score displayed****

Press 1

Press Yes

Guest Score

Press Guest Score You see Guest XX+ ****XX = current score displayed****

Press 1

Press Yes

****You cannot subtract from a score. To correct a mistake:**

Press Set

Press Home/Guest Score

Press Numerical key for proper score

Press Yes

Setting Penalties

Home Penalties

Press Set->Home Penalty You see PEN MM:SS

Press 0130 for 1:30, 0200 for 2:00, 0500 for 5:00 etc.

Press Yes You see H.PLAYER #

Press Numerical pad for player # ****For jersey # <10 you must enter 0 and then jersey #****

Guest Penalties

Press Set-> Guest Penalty You see PEN MM:SS
Press 0130 for 1:30, 0200 for 2:00, 0500 for 5:00 etc.
Press Yes You see G.PLAYER #
Press Numerical pad for player # ****For jersey # <10 you must enter 0 and then jersey #****

****If using running time but stop penalty time, to stop the penalty clock, Press Penalty On/Off to stop and start Penalty time****

Display Penalties on Control Box

Press Home Penalty You see H1 M:SS ##

Each time you press Home Penalty, the next penalty will display. Once all have been viewed it returns to 1st penalty

Guest works the same

Modifying Penalties

Press Home/Guest Penalty until desired penalty is displayed

To Insert a Penalty ahead of current ****Only used for 3rd or more penalties****

Press Penalty Insert You see INSERT (Y-N)
Press Yes You see PEN MM:SS
Press 0130 for 1:30, 0200 for 2:00, 0500 for 5:00 etc.
Press Yes You see H.PLAYER # or G.PLAYER ##
Press Numerical pad for player # ****For jersey # <10 you must enter 0 and then jersey #****

To edit a current Penalty

Press Penalty Edit You see EDIT (Y-N)
Press Yes You see PEN MM:SS
Press 0130 for 1:30, 0200 for 2:00, 0500 for 5:00 etc.
Press Yes

To Clear a Penalty

Press Penalty Clear You see CLEAR (Y-N)
Press Yes

To change Shots on Goal

Press Home Shots You see H.SHOTS X+ *X = current shots displayed
Press numerical pad to add to X
Press Yes

Press Guest Shots You see G.SHOTS X+ *X = current shots displayed
Press numerical pad to add to X
Press Yes

****You cannot subtract from shots. To correct a mistake:**

Press Set
Press Home/Guest Shots
Press Numerical key for proper score
Press Yes

Diagram 1

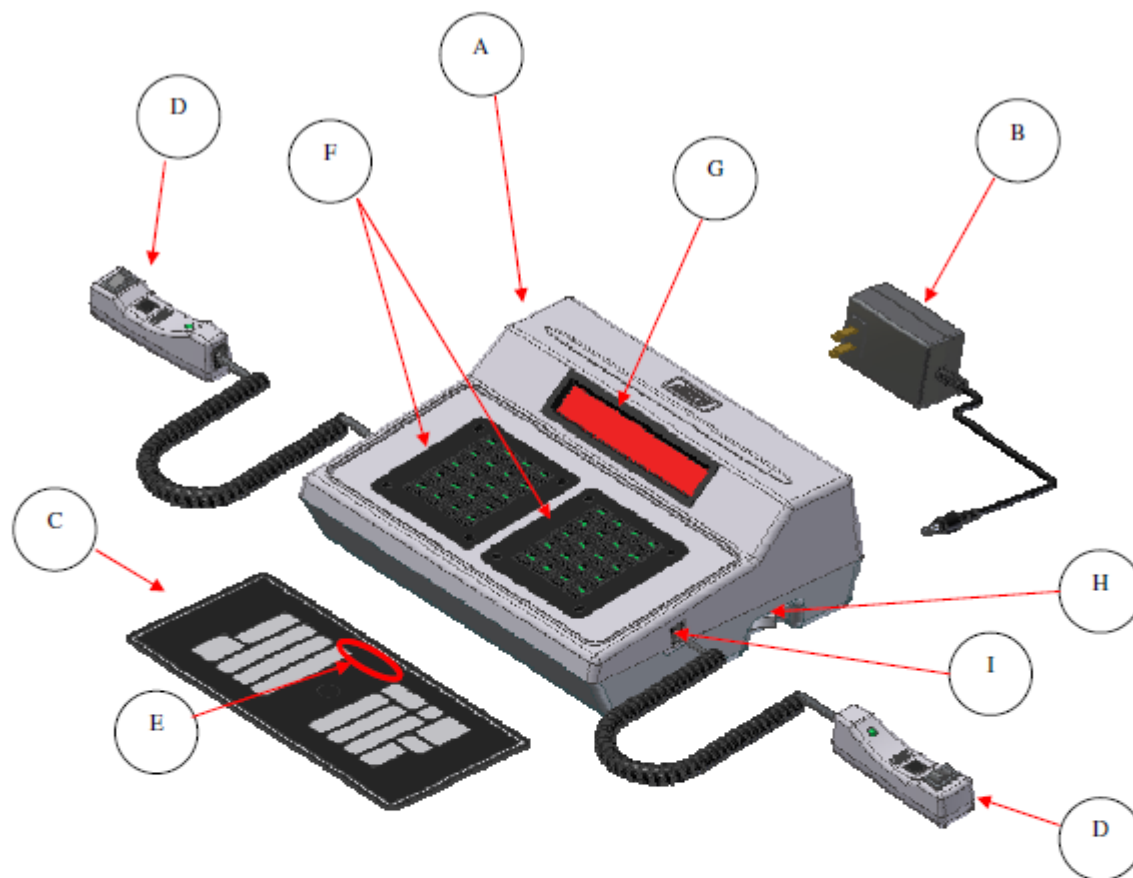


Figure 1 – MPC Control (front view)

A.	MPC Control	Can operate scoreboards for a wide range of sports and features.
B.	Power Supply	9 V DC (included with the control)
C.	Overlay	Fits on top of control to label the keys (included with system)
D.	Hand Held Switch	A TCS-5 time control switch is included with each control. Other switches are included with the accessories they operate.
E.	3 character Model Code location	This code sets up the control for your scoreboard model and sport
F.	Keypads	Left and Right (20 keys each)
G.	16 character display	Bright LED for better visibility
H.	Power On / Off switch	Removes power from the control only (does NOT turn power off to scoreboard)
I.	Jack for hand held switch	One on each side of control (use either jack for any Hand Held switch)

Diagram 2

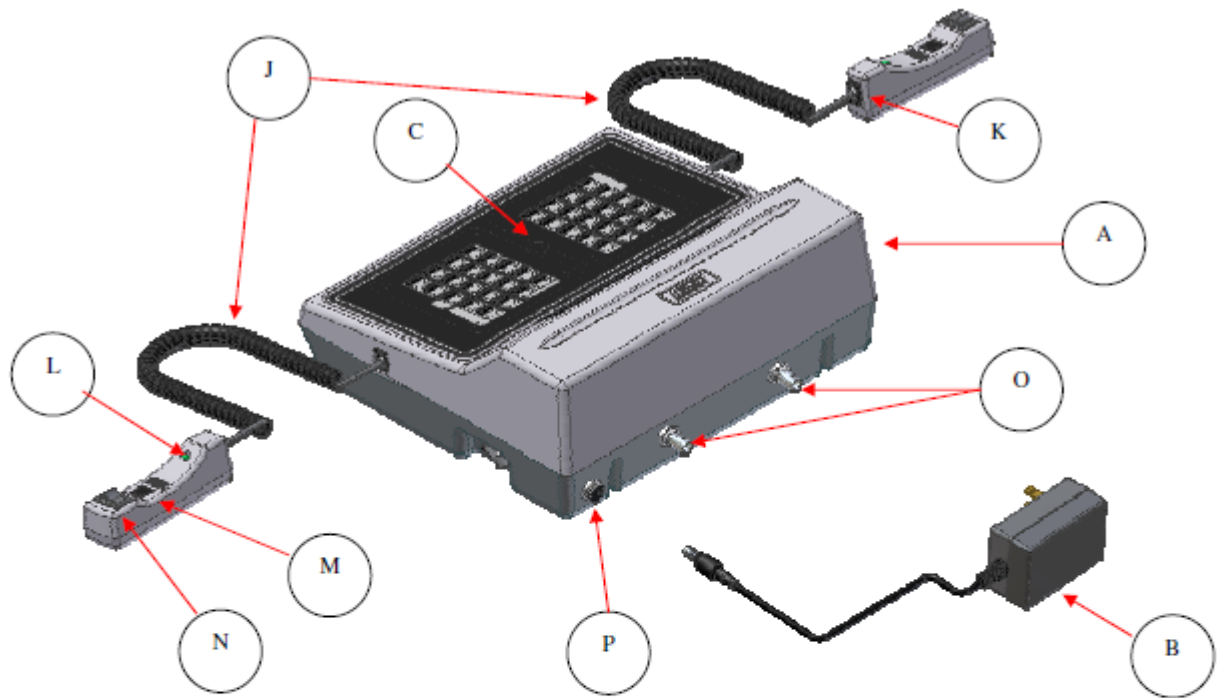


Figure 2 – MPC Control (rear view)

A.	MPC Control	Universal – to change sports, change the Overlay and enter the new Model Code.
B.	Power Supply	9 V DC (included with control)
C.	Overlay	For your scoreboard model (included with system)
J.	Coiled Cord	Stretches to over 4 ft. (included with switch)
K.	Socket for coiled cord	Makes it easy to replace the cord
L.	LED test indicator	Verifies that the Hand Held switch is working
M.	Remote push button switch	Function depends on type of Hand Held switch (on TCS-5 – sounds the horn)
N.	Remote rocker switch	Function depends on type of Hand Held switch (on TCS-5 – controls the time)
O.	Output to scoreboard	BNC connector for coax cable (use either or both as needed)
P.	Jack for power input	9 V DC