



VILLA
SISTEMI
MEDICALI

DENTAL
LINE

UCA DMS Implant



U C A I M P L A N T

Panoramic/Tomographic Dental X-ray System

Strato 2000

Strato 2000:
*the panoramic X-ray system
that grows as you do*



U C A D M S I M P L A N T

STRATO 2000 is the innovative system that grows along with your needs, from the basic panoramic application to the study of the TMJ and the paranasal sinuses up to the sophisticated tomographic exams for implantologic applications. All this together with user friendliness and accuracy of results at the highest level.

UCA: User Customizable Applications

The "U.C.A" (User Customizable Applications) technology will allow you to expand the scope of application of your system in a quick and effective way thanks to upgrade packages that you will be able to install into the unit by yourself by using a normal PC.

The system can be tailored to your needs in a unique way and it's open to accept any improvement and change both in your needs and in the examination techniques.



Thanks to the DMS software you can create a "radiological folder" for each patient, to keep track of each exam and all relevant exposure parameters.



DMS: Data Management System

The "D.M.S" (Data Management System) is the key to complete management of the archive of patients and related exams, to keep track of the exposure data of each exam taken.

With the DMS software you can plan the next exams directly from your PC thanks to a "virtual console" that can be used for instance to repeat a previous exam using exactly the same parameters as before, so to obtain images that are perfectly comparable.

With the software you can also print labels to be put on the X-ray films for easy identification.

Additional efficiency is added by the possibility of remote diagnostics that makes the maintenance quick and effective.

EVOLUTION



The DMS software allows full management of the unit

Strato 2000:
*technology and reliability
for great diagnostic results*



Movement on three independent axis





Accessory storage

The accessory storage compartment has 4 sterilizable trays that can accommodate the disposables and the accessories so to have them immediately available when required.

Motorized telescopic column

Sure diagnostic results

Primary feature of Strato 2000 is the guarantee of an excellent diagnostic result in every condition of use. We have put a special focus in the project to ensure the highest image quality aiming at improving the diagnosis, but also at maximizing the workflow.

Multi-motor technology

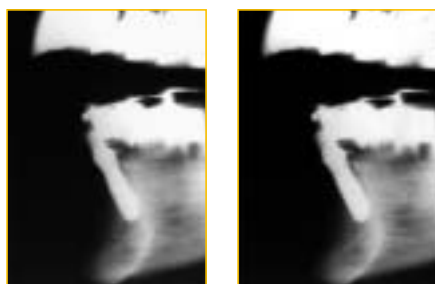
The motion of the rotating arm is obtained with three independent axis of movement controlled by software algorithms that can be easily expanded and modified to adapt to new and different needs.

Motorized telescopic column

The column has a dual-speed motorized movement for quick and precise patient positioning; an additional activation button prevents unwanted movements. The telescopic movement has three mounting positions that allow quick adaptation to rooms with any ceiling heights.



A C C U R A C Y



Strato 2000: quick, accurate patient positioning

Chin rest

Strato 2000 is equipped with different chin rests suitable for every situation, including a specific support for edentulous patients. The height of the supports can also be adjusted to enhance the visibility of the chin on the radiography when required.



Patients handles

The particular and ergonomic position of the handles has been studied to achieve three fundamental results: extend the cervical portion of the spine, lower the shoulders, ensure a strong and comfortable grip for the patient.



Patient positioning

It's well known that the key factor for a good panoramic radiography is a correct positioning of the patient. Strato 2000 incorporates a number of features intended to minimize the positioning error and to guarantee the best possible radiographic result.

Frontal positioning

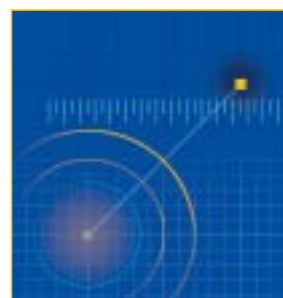
It's the most reliable, fast and accurate technique to position the patient. The frontal positioning makes possible to see the patient and the console at the same time, in addition to reducing the possibility of errors due to the image reflection used in most conventional systems. Eye-to-eye contact between the patient and the operator increases the patient's trust and reduces the claustrophobic disease in non-collaborating patients such as children and elderly.

Laser pointers

The perfect alignment of the patient is ensured by three laser beams that are used as a reference for an accurate alignment of the sagittal, canine and Frankfurt planes. The use of laser pointers instead of conventional lights projects a very thin marker which is highly defined and reduces the uncertainty area.

A C C U R A C Y

Strato 2000: the best image results



Constant magnification

All the images obtained in every examination program have constant magnification (in the center of the focal trough and in defined examination conditions). This feature allows to take reliable measurements of the anatomic structures.

Anatomic programs

According to the type of exam selected, it's possible to choose among different anatomic programs: patient type child/adult, patient size small/medium/large, arch shape narrow/normal/wide.

According to the combination of choices the system automatically selects the most suitable exposure parameters for the best image result.

It is also possible to modify the default parameters to adapt them to screen-film combination and the film processor available.



HF Generator

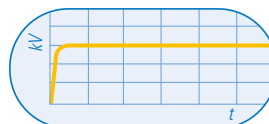
The very low residual ripple of the constant potential generator can reduce the dose to the patient up to 20% compared to conventional systems. The high frequency generator automatically sets all radiographic parameters according to the type of exam and the anatomic program to produce an unrivaled image quality. The

wide range of regulation of the parameters ensures the best choice for every application.

The wide range of regulation of the parameters ensures the best choice for every application.

Automatic collimator

Strato 2000 incorporates a fully automatic collimator that selects among the seven available diaphragms the most suitable one for the selected exam to achieve the highest image quality and the lowest possible dose for the patient.



User interface

All the controls of Strato 2000 are placed on an ergonomic and easily readable control panel. All the messages towards the operator are shown on the LCD alphanumeric display that guides the user through all the phases of the examination procedure. The x-ray emission pushbutton is equipped with an extensible cable.



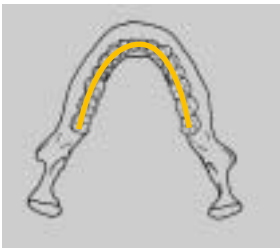
Patient and operator safety

All the x-ray parameters and all the moving parts are constantly controlled by software to minimize the effects of failures. In case of collision or power failure, the microprocessor interrupts the movements and allows the patient to abandon the examination position.

Strato 2000 Examination programs: Panoramic

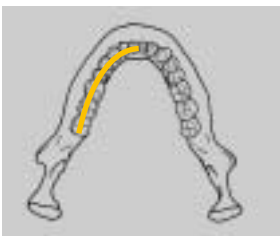
Panoramic adult

The panoramic programs on Strato 2000 give you the highest flexibility to obtain the best possible results, irrespective of the type of patient. The choice of anatomic programs include adult/child, three patient sizes and three arch shapes for a total of 18 different choices.



Emipanoramic

To reduce the patient's dose when the area of interest is just a portion of the arch, it's possible to select the Emipanoramic program which takes an image of just the left or right half of the arch.





Spine compensation

The compensation of the higher absorption due to the cervical spine is optimally achieved by a variable modulation of the exposure parameters during the entire movement.



Panoramic child

The child program has been developed especially to adapt to the particular anatomy and to reduce to the minimum the delivered dose thanks to an accurate choice of parameters and a dedicated collimator with reduced aperture.



Strato 2000 Examination programs Ceph

Soft tissues filter

To enhance the soft tissues profile in Lateral projections, Strato 2000 employs a motorized soft tissues filter. The position of the filter can be adjusted to fit the profile of each single patient. A scale on the head positioner indicates the correct filter position.



Cassette sizes

The unit can be requested with the collimator set to operate mainly with 18x24cm or 24x30cm cassettes. A version for 8"x10" cassettes is also available on request.

In each configuration it's possible to choose four different types of projections.

Automatic positioning

The automatic alignment of the tubehead to the ceph cassette avoids complicated manual procedures and ensures the highest positioning accuracy.

Cephalometric exam

Strato 2000 can be fitted with a cephalometric arm that allows to expand the scope of application to orthodontic procedures. Strato 2000 can be upgraded at any time directly in your practice.

The selection of the collimator diaphragm (among 4 available) is performed automatically depending on the selected exam.



Wrist and hand application

A specific program for the execution of the carpal exam can be used to evaluate the bone growth factor in children.

Strato 2000 Examination programs Implant

The Implant application package allows to perform exams by using the linear tomography technique thus expanding the diagnostic latitude of the system to implantologic treatments.

The Implant program allows to take very thin longitudinal and transversal slices in every position of the arch, for a correct treatment planning, but above all for an effective post-intervention follow-up directly in your office.

Patient positioning

The patient is positioned using dedicated bites that guarantee high patient comfort. The wide movement range of the rotating device allows to take the tomographic cuts in every position of the arch always keeping the patient in frontal position without the need of uncomfortable head rotations.

Diagnostic target selection

A unique technology allows the selection of the position of the cuts without the need of taking plaster casts, but simply by entering the tooth number via the console.



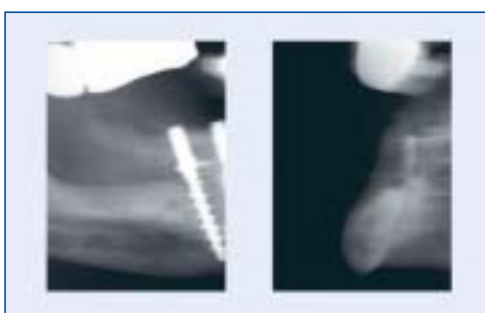
The ruler

A calibrated ruler supplied with the package allows to take accurate measurements on the film to compensate a possible deviation of the real slice position from the theoretical location.



The Bite

Two different bites allow to perform the exam in every possible condition.

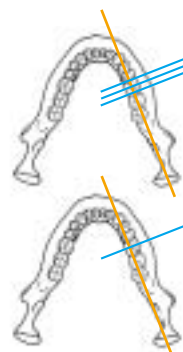


IMPLANT 4 exam

One longitudinal section 4,6 or 8 mm thick and three transversal sections having 2, 3 or 4 mm thickness and distance are taken on one film.

IMPLANT 2 exam

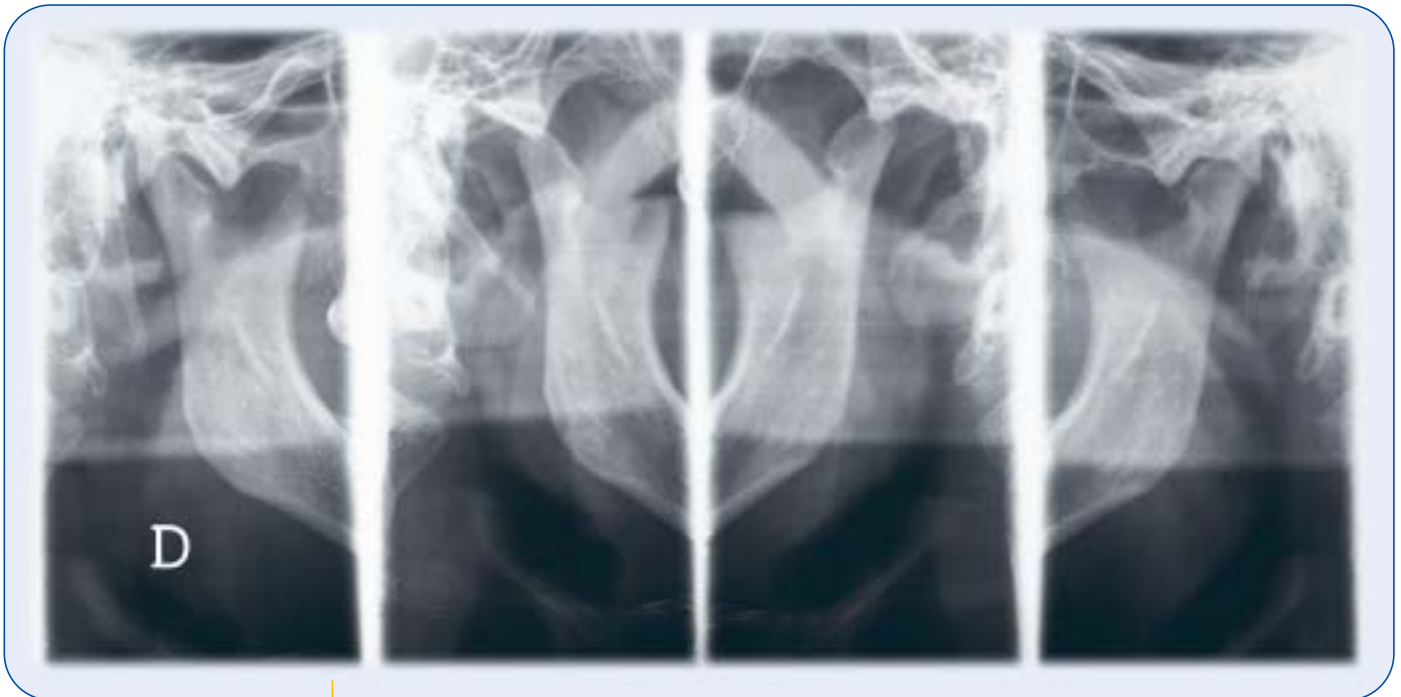
A reduced exam is also available to take just one longitudinal and one transversal slice.



Strato 2000 Examination programs TMJ

TMJ (Temporo Mandibular Joint)

The package for the study of the Temporo-Mandibular Joint allows to take different projections of the joint according to the type of investigation to be carried on.



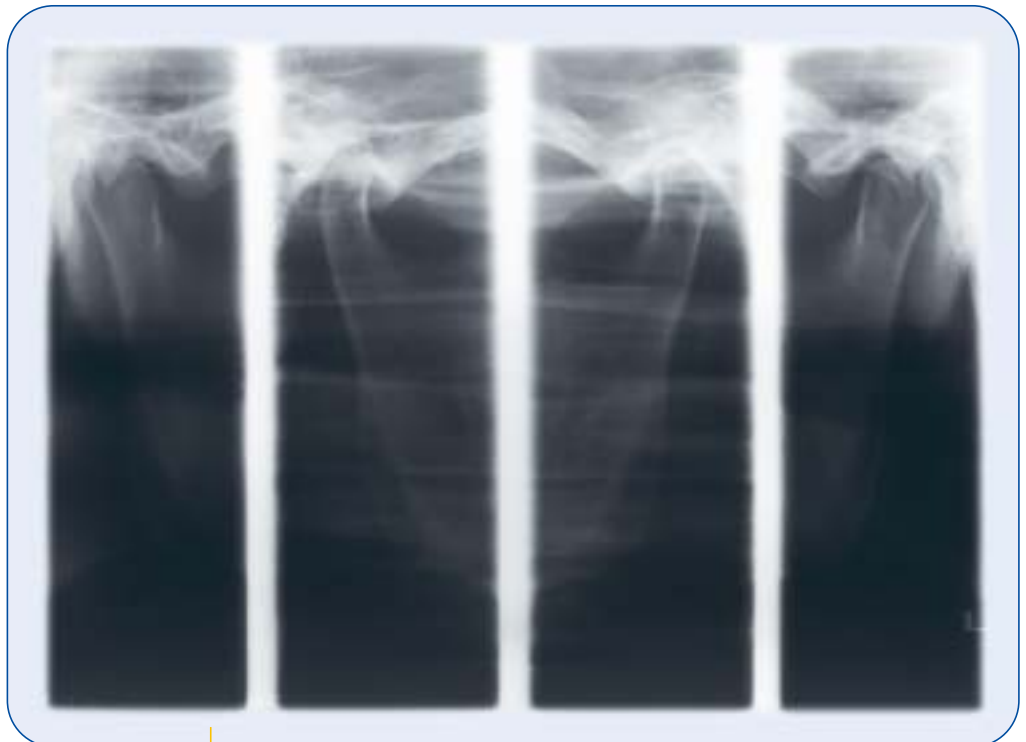
Open-Closed mouth TMJ

Four images are taken on the same film: left joint open, left closed, right closed, right open. This exam allows to evaluate the movement of the condyle inside the fossa.

P-A TMJ

The Postero-Anterior view of the Temporo Mandibular Joint gives additional details of the condyle inside the fossa, otherwise not visible in the classical lateral projection.

The combination of both views gives a complete representation of the anatomical district.



Bi-Axial TMJ

Once again four images are taken. The mouth is kept closed and two different projection are taken for each joint. One projection is parallel to the long axis of the condyle, the other is taken at an angle of 40°.

Strato 2000
Examination programs
Sinus



The Sinus package includes exams that allow to take stratigraphy images suitable for the study of the paranasal sinuses.

P-A Maxillary Sinus

Allows to take a Postero-Anterior view of the maxillary sinuses.

P-A Frontal SINUS

This program is complementary to the others dedicated to the study of maxillary sinuses. In fact it allows to take a stratigraphy in Postero-Anterior projection of the Frontal sinuses. For this exam it also necessary to use a dedicated chin support.



L-L Maxillary Sinus

It's complementary to the P-A view and allows to take Lateral projections of each maxillary sinus.

Strato 2000 Examination programs Advanced Dental Applications

The A.D.A. package (Advanced Dental Applications) includes different exams especially developed for use in the dental practice.

Improved Orthogonality Dentition

Is a panoramic projection taken with the X-ray beam constantly orthogonal to the arch to reduce the overlapping of adjacent teeth and improve the visibility of interproximal caries.



Low dose panoramic

The angle of rotation is reduced so to exclude the ascending ramus from the image. The result is a panoramic limited to the dentition area using a reduced patient dose.

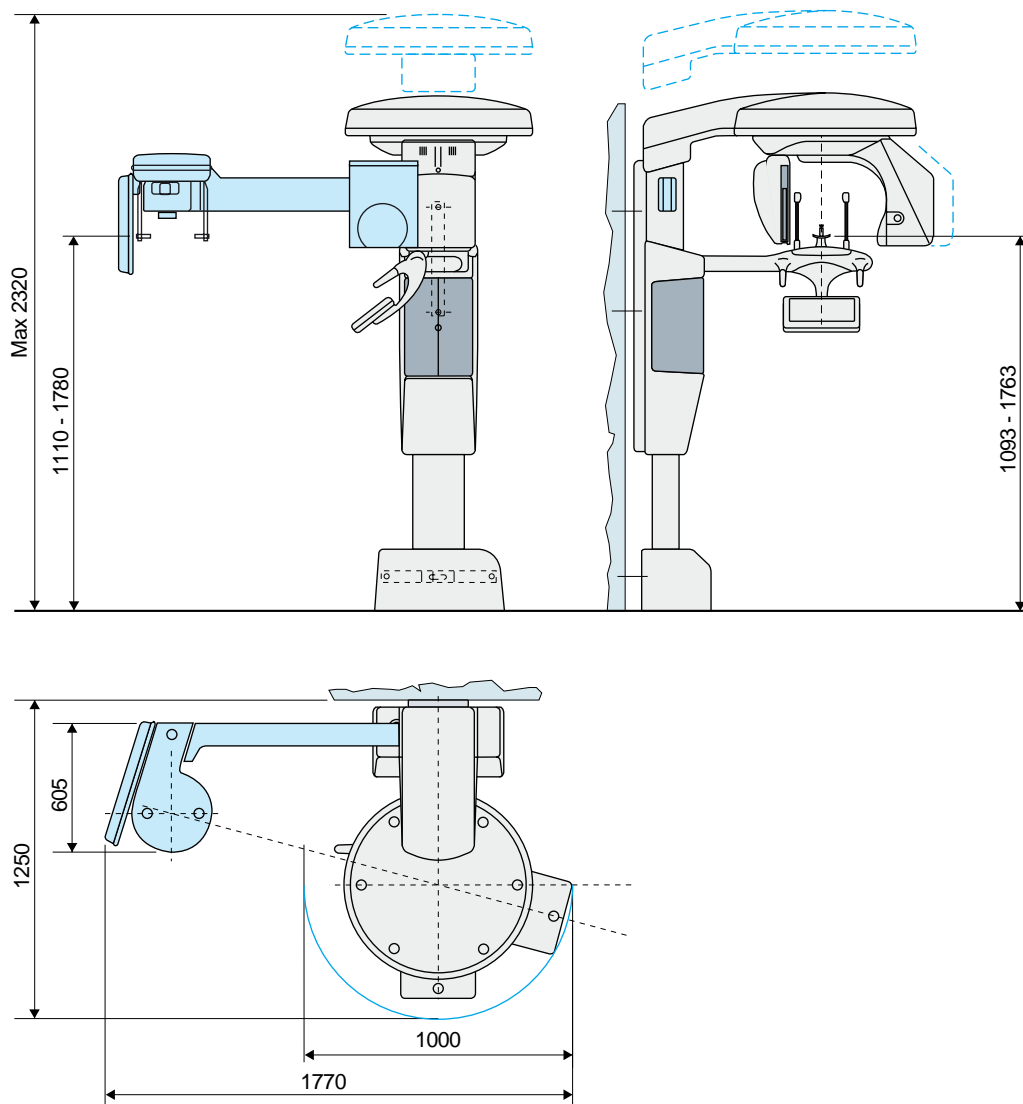
Frontal dentition

It's a panoramic limited to the frontal dentition, from canine to canine, that allows to improve the detail definition on incisors.



Strato 2000

Technical data



Weight		without ceph arm: 135kg with ceph arm: 150kg
High voltage		50-80 kVp, in 2 kV steps
Anode current		4-12 mA, in 1 mA steps (4-12 mA, in 1 mA steps for ceph)
Focal spot		0.5 (IEC336)
Exposure times	panoramic	15 sec adult, 13.5 sec child
	TMJ open/closed mouth	4x2.65 sec
	Ceph	0.2-3 sec
Power supply voltage		230/120 Vac (10%) single phase, 50/60 Hz
Absorbed current		8A @ 230 V, 15A @ 108V
Power rating		2 kVA
Cassette size	Panoramic, Implant, Sinus, other exams	15x30 flat
	Ceph	18x24, 24x30 or 8"x10" (to be specified at order)

Some of the exams and of the "UCA" packages might be under development at the time of publication of this brochure. Contact Villa Sistemi Medicali sales network for actual availability. Products are continuously under review in the light of technical advancement. The actual specification may therefore be subject to improvement or modification without notice.

Villa Sistemi Medicali

long-standing experience at the service of our customers



Competence in x-ray systems

Villa Sistemi Medicali specialists can provide qualified information on new x-ray systems, room structure and installation and equipment positioning.

A wide range of equipment

Villa Sistemi Medicali is among the major European manufacturers of radiological systems and offers a wide range of products, such as:

- Digital radiographic and angiographic systems
- Remote controlled tables
- Classical tilting tables
- General rad floating tables
- Chest stands
- Mobile units
- Surgical C arms
- HF Generators
- Dental units, Intra-oral and panoramic

Our priority: Technical Service

A wide network of highly skilled service engineers ensures effective and reliable maintenance of all Villa Sistemi Medicali equipment installed worldwide. Preventive maintenance programs and Service Contracts are adapted to the needs of our customers.

Logistic services: a widespread presence

Spare parts, accessories and consumables are shipped daily by Villa Sistemi Medicali to all its customers worldwide.